

TEAMWEAR

— 2021 —

EN





RUSSELL TEAMWEAR

Over 115 years of tradition – Russell is a team player in the imprint industry.

The rules of success and of togetherness are changing: our society and our professional environment are shaped by change, diversity and complexity.

Every individual wants safety, sovereignty and acceptance. Together with our partners and customers, we are constantly adapting to these changes: we are team players and aim to integrate their requirements in our solutions.

The products and services that emerge from this attitude help every individual to be a part of society or part of a company – self-sufficient and successful – for the good of both individual and corporate identity. Innovation, creativity, quality and outstanding product expertise are our driving force.

For our partners and customers, this means consistency in the product, reliability in our partnership and long-term success.

We bring people together in their individuality – for a better us.





CONTENTS

ETHICS & COMPLIANCE	7
RUSSELL PURE ORGANIC™	8
SHIRTS & BLOUSES RUSSELL COLLECTION	10
KNITWEAR RUSSELL COLLECTION	44
T-SHIRTS	50
POLOS	74
SWEATSHIRTS & JOG PANTS	90
FLEECE	124
JACKETS	130
WORKWEAR	154
RANGE OVERVIEW	160
SIZE GUIDE	168
MODELS	172
FEATURES & FUNCTIONS	176
COLOUR PALETTE	178



ETHICS & COMPLIANCE

We are taking responsibility.

That's why we only work with suppliers that strive to protect the environment and its natural resources. As a team, we want to minimise our ecological footprint, which is why we use responsibly manufactured products, day in, day out – for a better world.

Fairness, loyalty and appreciation are our utmost priority.



OEKO-TEX

Our entire Russell collection complies with the Oeko-Tex® Standard 100, which verifies that no illegal or harmful substances are used in the production of any of our garments.



WRAP - WORLDWIDE RESPONSIBLE ACCREDITED PRODUCTION

Most of our production facilities are independently certified by WRAP, the world's responsible production accreditors, for adherence to international ethical standards.



AMFORI BSCI

Member of amfori, the leading global business association for open and sustainable trade. We participate in amfori BSCI. All of our production facilities are independently certified to the amfori BSCI standard to ensure they meet our compliance standards.

For more information visit www.amfori.org



GOTS - GLOBAL ORGANIC TEXTILE STANDARD

The Global Organic Textile Standard (GOTS) is recognised as the world's leading processing standard for textiles made from organic fibres. It defines high-level environmental criteria along the entire organic textiles supply chain and requires compliance with social criteria as well.

The Russell brand is GOTS certified and fulfils all legal obligations of the Global Organic Textile Standard (GOTS). The certification only applies to products which are labelled and/or marked with the GOTS logo. If a certified product is not treated or decorated in compliance with GOTS guidelines, the logo and all reference to GOTS must be removed.

All catalogue details are correct at time of going to print.



pure organic[®]
organic

209M



209M



118M/F

EMPOWERING NATURE

FROM MAKERS
TO WEARERS



This is a GOTS certified product before any embellishment is done. If not treated or decorated in compliance with GOTS guidelines, the logo and all reference to GOTS must be removed.

ALL NEW PURE ORGANIC



108M/F/B
Pure Organic T
See **page 58** for details



103M/F
Pure Organic V-Neck T
See **page 60** for details



118M/F
Pure Organic Heavy T
See **page 61** for details



508M/F
Pure Organic Polo
See **page 81** for details



100M
Pure Organic Long Sleeve T
See **page 59** for details



208M
Pure Organic Reversible Sweat
See **page 98** for details



209M
Pure Organic High Collar Hooded Sweat
See **page 99** for details



SHIRTS & BLOUSES



RUSSELL SINCE 1902
COLLECTION



OUR SHIRTS RANGE

POPLIN



PURE COTTON POPLIN SHIRTS
936M/F • 937M/F



POLYCOTTON POPLIN SHIRTS
934M/F • 935M/F
924M/F • 925M/F • 926F



STRETCH POPLIN SHIRTS
946M/F • 947M/F



ULTIMATE STRETCH POPLIN SHIRTS
960M/F • 961M/F • 966M

OXFORD



WASHED OXFORD SHIRT
920M



OXFORD SHIRTS
922M • 923M • 928M
932M/F • 933M/F

MICRO TWILL



ULTIMATE NON-IRON SHIRTS
956M/F • 957M/F • 958M • 959M



COOLMAX® SHIRTS
972M/F • 973M/F

TWILL



CLASSIC TWILL SHIRTS
916M/F • 917M/F



ROLL SLEEVE TWILL SHIRTS
918M/F • 919M/F

HERRINGBONE



HERRINGBONE SHIRTS
962M/F • 963M/F • 964M

WHY RUSSELL SHIRTS & BLOUSES?

Shirts and blouses from Russell are known for their excellent fit.

That's why it was important to us that men and women can both choose from short and long sleeve styles to fit them individually.

We were the first manufacturer in the imprint industry that deviated from standard unisex models.

Today, we still want to offer you the best possible selection: our range includes all common weaves, materials and fits.

Shirts and blouses from Russell lend themselves perfectly to the look of your company – premium quality for optimal performance!



FITS



CLASSIC

A traditional shaped shirt for a relaxed fit.



TAILORED

A semi-fitted shirt for a more contemporary look.



FITTED

A slim fit for a stylish and fashionable appearance.

YOUR ADVANTAGES

ADVANTAGES FOR DECORATORS



Space in the middle for a finish or print thanks to two side pleats inset into the yoke



Embroiderable collar stays

ADVANTAGES FOR COMPANIES & TEAMS



All common weaves in different weights:
Poplin, Oxford, Twill, Micro Twill,
Herringbone



Fitted, tailored or classic fit



100% cotton, stretch fabrics,
cotton blend



Truly non-iron, robust or excellent moisture
regulation with Coolmax®



Sizes from XS to 6XL, almost all models for
men and women with long and short sleeves



EC Easy Care – Easy-care shirts and blouses,
truly non-iron, suitable for tumble drying,
washable up to 40°C

CUFF STYLES



ROUNDED EDGE CUFFS

Adjustable with 2 buttons.



SQUARE EDGE CUFFS

Adjustable with 2 buttons.



MITRED EDGE CUFFS

Adjustable with 2 buttons.



COCKTAIL CUFFS

These can be worn either turned or not turned, for a stylish look.



CUFF LINKS

Many shirts offer the option to wear cuff links.



COLLARS



KENT

Perfect for business, this classic collar is named after the Duke of Kent.



NEW KENT

Not as wide-flared as the Cutaway or as sharp-cut as the Kent collar, this modern style is stiffened, boned and suitable for embroidery.



BUTTON DOWN

The modern sporty buttoned-down collar gives a smart appearance without a tie.



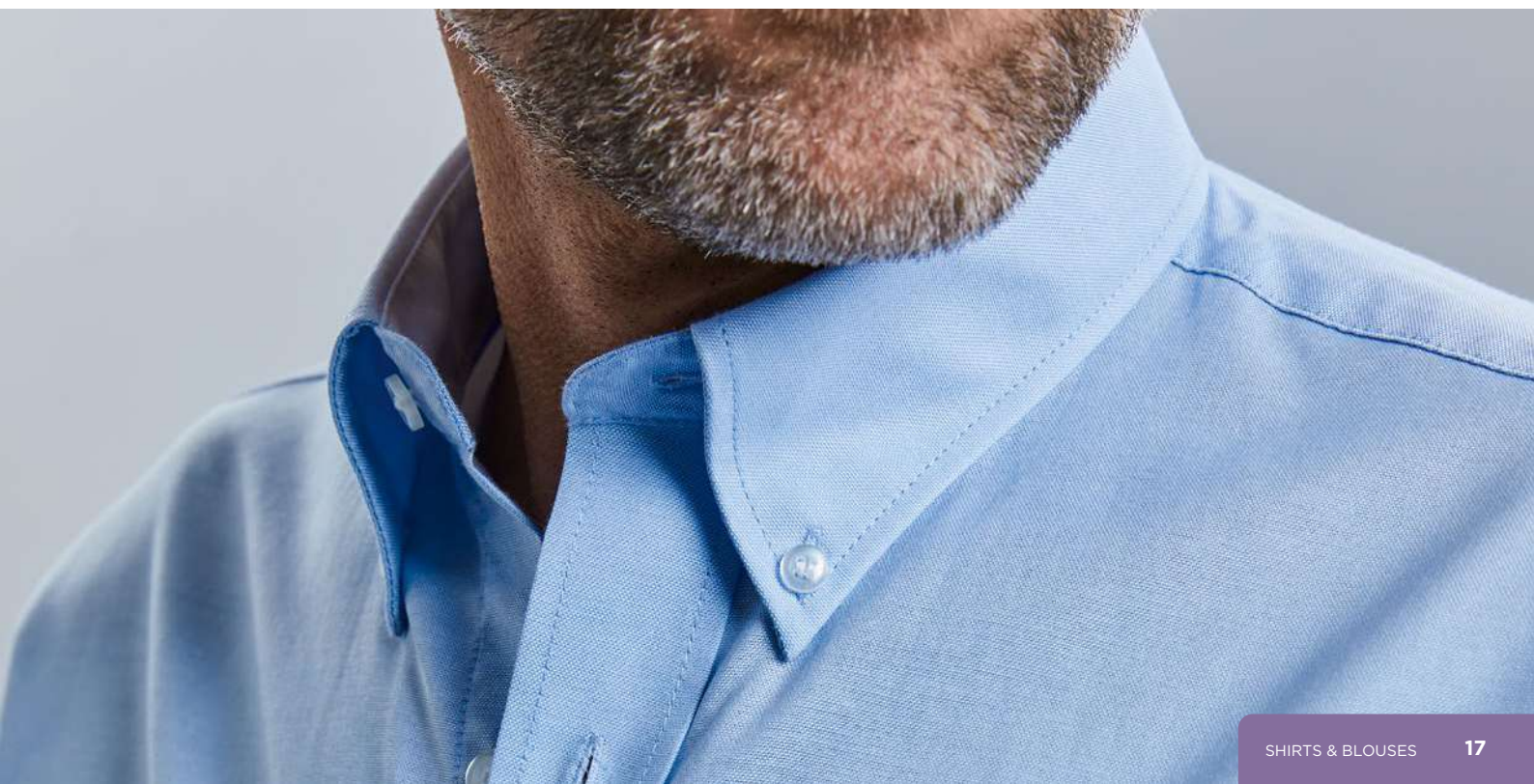
UNDER BUTTON DOWN

This type of collar is ideal for wearing without a tie and with an open collar button.



LADIES

Our Ladies' Shirts feature a classic collar distinguished in style by its length and shape.





924F
Ladies' Long Sleeve Fitted
Polycotton Poplin Shirt
Page 21

POPLIN



925F

Shirts and blouses made of poplin have a very elegant look thanks to the subtle sheen on the surface. Fine yarns give the high-quality fabric a soft, supple feel. The fabric makes the tops extremely breathable. It will ensure you feel great in your clothes despite a long day at work.

Poplin is nice and lightweight, which makes it perfect for any time of year. What's more, the fabric features a plain weave structure and is robust and durable.

925M



Polycotton Poplin shirts are elegant and extremely versatile.

- » Easy Care
- » Left chest pocket
- » Curved hem

934M, 935M

- » Stiffened Kent boned collar
- » Back yoke with 2 side pleats
- » Rounded 2 button adjustable cuffs (934M)

934F, 935F

- » Classic Collar
- » Rounded 2 button adjustable cuffs (934F)

POLYCOTTON POPLIN SHIRT

CLASSIC

934 · 935



934M

Men's Long Sleeve Classic
Polycotton Poplin Shirt
FIT Classic • **SIZES** S-4XL



934F

Ladies' Long Sleeve Classic
Polycotton Poplin Shirt
FIT Classic • **SIZES** XS-4XL



935M

Men's Short Sleeve Classic
Polycotton Poplin Shirt
FIT Classic • **SIZES** S-4XL



935F

Ladies' Short Sleeve Classic
Polycotton Poplin Shirt
FIT Classic • **SIZES** XS-4XL



EC EASY CARE

LAUNDRY CARE
50°C machine wash, tumble dry



MATERIAL / WEIGHT
65% Polyester, 35% Cotton Poplin
White: 110g/m², Colours: 105g/m²

PACKING
Pack 1/ Carton 12

POLYCOTTON POPLIN SHIRT

TAILORED & FITTED
924 · 925 · 926

924M

Men's Long Sleeve
Tailored Polycotton
Poplin Shirt
FIT Tailored
SIZES S-4XL



924F

Ladies' Long Sleeve
Fitted Polycotton
Poplin Shirt
FIT Fitted
SIZES XS-4XL



925M

Men's Short Sleeve
Tailored Polycotton
Poplin Shirt
FIT Tailored
SIZES S-4XL



925F

Ladies' Cap Sleeve
Fitted Polycotton
Poplin Shirt
FIT Fitted
SIZES XS-4XL



926F

Ladies' 3/4 Sleeve
Fitted Polycotton
Poplin Shirt
FIT Fitted
SIZES XS-4XL



- » Easy Care
- » Curved hem

924F, 925F, 926F

- » Stylish yoke design
- » Concealed placket
- » Darts on bust, front hem and back panel for fitted shape
- » Decorative top stitch on darts
- » Narrow 2 button adjustable cuffs (926F)
- » Fashionable cap sleeves (925F)
- » Rounded double buttoned cuffs (924F)

924M, 925M

- » Stiffened Kent boned collar
- » Rounded 2 button adjustable cuffs with option for cuff links (924M)
- » Double turnback hem on sleeves (925M)

EC EASY CARE

50° LAUNDRY CARE
50°C machine wash, tumble dry



MATERIAL / WEIGHT
65% Polyester, 35% Cotton Poplin
White: 110g/m², Colours: 105g/m²

PACKING
Pack 1/ Carton 12

This is an elegant and very durable shirt with all the comfort of 100% cotton.

- » Easy Care
- » Left chest pocket

936F, 937F

- » Classic Collar
- » Rounded 2 button adjustable cuffs (936F)
- » Curved hem

936M, 937M

- » Classic Kent boned collar
- » Back yoke with 2 side pleats
- » Rounded 2 button adjustable cuffs (936M)
- » Straight hem

PURE COTTON POPLIN SHIRT

936 · 937



936M

Men's Long Sleeve Classic
Pure Cotton Poplin Shirt
FIT Classic • **SIZES** S-4XL



936F

Ladies' Long Sleeve Classic
Pure Cotton Poplin Shirt
FIT Classic • **SIZES** XS-4XL



937M

Men's Short Sleeve Classic Pure
Cotton Poplin Shirt
FIT Classic • **SIZES** S-4XL



937F

Ladies' Short Sleeve Classic Pure
Cotton Poplin Shirt
FIT Classic • **SIZES** XS-4XL



EC EASY CARE

LAUNDRY CARE
40°C machine wash, tumble dry

936M, 937M



936F, 937F



MATERIAL / WEIGHT
100% Cotton Poplin
White: 120g/m², Colours: 125g/m²

PACKING
Pack 1/ Carton 12

STRETCH SHIRT

946 · 947



946M

Men's Long Sleeve Fitted Stretch Shirt

FIT Fitted • **SIZES** S-4XL



946F

Ladies' 3/4 Sleeve Fitted Stretch Shirt

FIT Fitted • **SIZES** XS-2XL



947M

Men's Short Sleeve Fitted Stretch Shirt

FIT Fitted • **SIZES** S-4XL



947F

Ladies' Short Sleeve Fitted Stretch Shirt

FIT Fitted • **SIZES** XS-2XL



The fitted cut and contemporary design make this style modern.

- » Easy Care
- » Curved hem

946M, 947M

- » Stiffened New Kent boned collar
- » Mitred double buttoned cuffs (946M)

946F, 947F

- » Darts on bust front hem and back panel for fitted shape
- » Stylish elbow length $\frac{3}{4}$ sleeve with split cuffs (946F)
- » Stylish capped short sleeves (947F)

EC EASY CARE

 **LAUNDRY CARE**
40°C machine wash, tumble dry

30 **36** **CQ** **PT**

MATERIAL / WEIGHT

97% Cotton, 3% Elastane Poplin
140g/m²

PACKING

Pack 1/ Carton 12



ULTIMATE STRETCH SHIRT

966 · 960 · 961

966M

Men's Long Sleeve
Tailored Contrast
Ultimate Stretch Shirt

FIT Tailored

SIZES S-4XL



960M

Men's Long Sleeve Fitted
Ultimate Stretch Shirt

FIT Fitted

SIZES S-4XL



960F

Ladies' Long Sleeve
Fitted Ultimate
Stretch Shirt

FIT Fitted

SIZES XS-4XL



961M

Men's Short Sleeve Fitted
Ultimate Stretch Shirt

FIT Fitted

SIZES S-4XL



961F

Ladies' Short Sleeve
Fitted Ultimate Stretch Shirt

FIT Fitted

SIZES XS-4XL



Our Ultimate Stretch Shirt uses the revolutionary elastomultiester LYCRA® T400® fibre. This innovative fibre gently stretches and recovers in every direction for a premium shirt that retains its fit, all day long.

- » Easy Care
- » Durable fabric
- » Longer fit
- » Excellent shape retention for a lasting fit
- » Darts at back improve fit
- » Moisture management for cool comfort
- » Curved hem

960F/961F

- » Neat modern collar
- » Princess cut
- » Cocktail cuffs with 2 button fastening with extended gauntlet (960F)

960M/961M

- » Stiffened New Kent boned collar
- » Square edged 2 button adjustable cuffs, with option for cuff links (960M)

966M

- » Under-Button-Down collar
- » Fashionable two-coloured contrasts: cuffs (inside) with zigzag stitch, collar (inside)
- » Contrasting colours at cuff buttonhole and lowest buttonhole
- » Rounded 2 button adjustable cuffs with option for cuff links



LYCRA®



EASY CARE



LAUNDRY CARE

40°C machine wash,
tumble dry, no softeners

966M



960M, 960F, 961M, 961F



MATERIAL / WEIGHT

75% Cotton, 25% Elastomultiester
(LYCRA® T400® fibre) Poplin
White: 125g/m², Colours: 130g/m²

PACKING

Pack 1/ Carton 12

Oxford fabric, which features a variation of the plain weave, stands out thanks to its durability and soft texture. The firm, densely woven material is a great choice for shirts and blouses for colder weather. The coarse surface makes clothing in this material resistant to dirt and wear.

Combining dyed and undyed yarns gives the Oxford fabric a characteristic two-tone textured appearance. At Russell, you can also get plain-coloured Oxford designs.

OXFORD



933F



928M
Men's Long Sleeve Tailored
Button-Down Oxford Shirt
Page 30



WASHED OXFORD SHIRT

920



920M

Men's Long Sleeve Tailored
Washed Oxford Shirt

FIT Tailored • **SIZES** S-4XL



This shirt is made of 100% finest cotton and the modern, tapered fit ensures best wearing comfort. Attractive features include the harmonious colour contrasts on the inside of the collar and in the cuffs. This individual washed-out look is generated through the special "garment washed" process. The button-down collar gives it a sporty touch. Whether casual or chic - you are always well dressed with Russell shirts.

- » Easy Care
- » Button down collar
- » 100% combed ringspun cotton
- » Garment washed
- » Fashionable contrasts: cuffs (inside), collar (inside)
- » Contrast buttons
- » Left chest pocket
- » Removable fashionable loop for optional attachment of ties or glasses
- » Rounded 2 button adjustable cuffs
- » Curved hem

EC EASY CARE

 **LAUNDRY CARE**
40°C machine wash, tumble dry



MATERIAL / WEIGHT

100% Cotton Oxford
130g/m²

PACKING

Pack 1/ Carton 12

Oxford weave is a core fabric in the fashion world. Ideal for any corporate team, our Oxford range allows everyone to look their best, while presenting a smart and consistent team appearance. Oxford incorporates a thicker yarn and a thinner yarn to create a distinctive, textured finish. The distinctive weave structure creates an extremely durable fabric that not only looks the part, but also washes and irons beautifully.

- » Easy Care
- » Curved hem

928M

- » Button down collar
- » Darts at back improve fit
- » Left chest pocket
- » Rounded 2 button adjustable cuffs

922M, 923M

- » Stiffened Kent boned collar
- » Rounded 2 button adjustable cuffs, with option for cuff links (922M)

OXFORD SHIRT

TAILORED

928 · 922 · 923



928M
Men's Long Sleeve Tailored Button-Down Oxford Shirt
FIT Tailored • **SIZES** S-4XL



922M
Men's Long Sleeve Tailored Oxford Shirt
FIT Tailored • **SIZES** S-4XL



923M
Men's Short Sleeve Tailored Oxford Shirt
FIT Tailored • **SIZES** S-4XL



EC EASY CARE

LAUNDRY CARE
40°C machine wash, tumble dry

922M, 923M



928M



MATERIAL / WEIGHT
70% Cotton, 30% Polyester Oxford
White: 130g/m², Colours: 135g/m²

PACKING
Pack 1/ Carton 12

OXFORD SHIRT

CLASSIC & TAILORED

932 · 933



932M

Men's Long Sleeve
Classic Oxford Shirt
FIT Classic • **SIZES** S-6XL



932F

Ladies' Long Sleeve
Tailored Oxford Shirt
FIT Tailored • **SIZES** XS-6XL



933M

Men's Short Sleeve
Classic Oxford Shirt
FIT Classic • **SIZES** S-6XL



933F

Ladies' Short Sleeve
Tailored Oxford Shirt
FIT Tailored • **SIZES** XS-6XL



- » Easy Care
- » Curved hem

932F, 933F

- » 2 button collar stand with classic shaped collar
- » Darts at bustline and back for tailored fit
- » Rounded 2 button adjustable cuffs (932F)

932M, 933M

- » Button down collar
- » Back yoke with 2 side pleats
- » Left chest pocket
- » Rounded 2 button adjustable cuffs (932M)



EC EASY CARE

40° LAUNDRY CARE
40°C machine wash, tumble dry



MATERIAL / WEIGHT
70% Cotton, 30% Polyester Oxford
White: 130g/m², Colours: 135g/m²

PACKING
Pack 1/ Carton 12

Shirts and blouses made of twill are perfect for demanding days on the job. These business classics are crease resistant and very easy to care for. The material is very robust and also boasts a subtle sheen. Alongside its diagonal texture, twill weave fabric is also characterised by its soft, supple feel.

Micro twill is a more lightweight alternative to classic twill fabrics and is made using finer yarns and with a higher yarn count.



972M

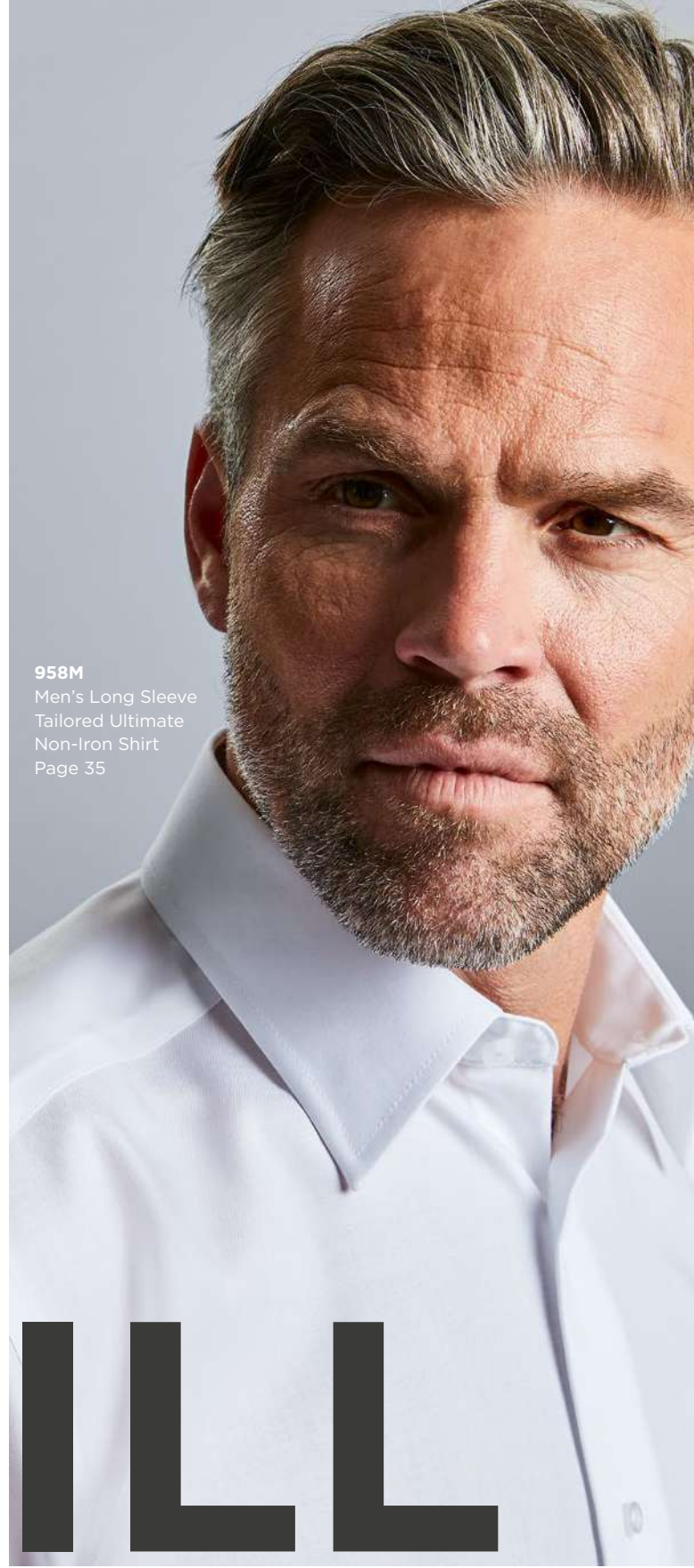


916F





956F
Ladies' Long Sleeve
Tailored Ultimate
Non-Iron Shirt
Page 34



958M
Men's Long Sleeve
Tailored Ultimate
Non-Iron Shirt
Page 35

TWILL

MICRO
TWILL

Our most premium shirt, offering a luxurious fabric and elegant contemporary design.

- » Easy Care
- » Non-iron
- » Curved hem

956F, 957F

- » Stylish and relaxed long edged collar
- » Twin button fastening
- » Cocktail cuffs with single button fastening with extended gauntlet and option for cuff links (956F)

956M, 957M

- » Button down collar
- » Back yoke with 2 side pleats
- » Left chest pocket
- » Contemporary size mitred cuffs, adjustable with two buttons and with option for cuff links (956M)

ULTIMATE NON-IRON SHIRT

CLASSIC & TAILORED

956 · 957



956M

Men's Long Sleeve Classic
Ultimate Non-Iron Shirt
FIT Classic • **SIZES** S-4XL



956F

Ladies' Long Sleeve Tailored
Ultimate Non-Iron Shirt
FIT Tailored • **SIZES** XS-4XL



957M

Men's Short Sleeve Classic
Ultimate Non-Iron Shirt
FIT Classic • **SIZES** S-4XL



957F

Ladies' Short Sleeve Tailored
Ultimate Non-Iron Shirt
FIT Tailored • **SIZES** XS-4XL



EC EASY CARE

LAUNDRY CARE
40°C machine wash, tumble dry

30 **36** **BZ**

MATERIAL / WEIGHT

100% Cotton Micro Twill
120g/m²

PACKING
Pack 1/ Carton 12

ULTIMATE NON-IRON SHIRT

TAILORED
958 • 959

- » Easy Care
- » Non-iron
- » Curved hem
- » Stiffened Kent boned collar
- » Stylish, mitred cuffs, adjustable with two buttons and option for cuff links (958M)



958M

Men's Long Sleeve Tailored
Ultimate Non-Iron Shirt
FIT Tailored • **SIZES** S-4XL



959M

Men's Short Sleeve Tailored
Ultimate Non-Iron Shirt
FIT Tailored • **SIZES** S-4XL



EC EASY CARE

 **LAUNDRY CARE**
40°C machine wash, tumble dry



MATERIAL / WEIGHT
100% Cotton Micro Twill
120g/m²

PACKING
Pack 1/ Carton 12



COOLMAX® SHIRT

972 · 973



972M

Men's Long Sleeve Tailored
Coolmax® Shirt

FIT Tailored • **SIZES** S-4XL



972F

Ladies' Long Sleeve Tailored
Coolmax® Shirt

FIT Tailored • **SIZES** XS-4XL



973M

Men's Short Sleeve Tailored
Coolmax® Shirt

FIT Tailored • **SIZES** S-4XL



973F

Ladies' Short Sleeve Tailored
Coolmax® Shirt

FIT Tailored • **SIZES** XS-4XL



Corporate athleisure is the new trend that allows sportive functionality, comfort and design to be incorporated into everyday work. The specially developed Coolmax® fibre ensures high breathability and is extremely moisture-regulating. The Coolmax® shirts by Russell are the perfect allrounder!

- » Easy Care
- » Breathability and moisture regulation thanks to Coolmax® fibre technology
- » Durable Micro-Twill

972F/973F

- » Neat modern collar
- » Darts on bust front hem and back panel for tailored shape
- » Mitred 2 button adjustable cuffs (972F)

972M/973M

- » Stiffened New Kent boned collar
- » Back yoke with 2 side pleats
- » Left chest pocket
- » Mitred 2 button adjustable cuffs (972M)

EXCELLENT
MOISTURE
REGULATION

COOLMAX® COOLMAX.COM

EC EASY CARE

40° LAUNDRY CARE
40°C machine wash, tumble dry, no softeners

30 42

MATERIAL / WEIGHT
70% Cotton, 30% Coolmax®-Polyester Micro Twill
White: 110 g/m²; Colours: 105 g/m²

PACKING
Pack 1/ Carton 12

.....

This updated favourite features soft twill fabric, relaxed styling and modern design features.

- » Soft to touch peached fabric
- » Decorative fabric patch below back yoke
- » Pointed fabric patches on side seam hem
- » Dyed-to-match grosgrain back neck tape
- » Stylish double buttoned rounded edge cuffs (916M/F)
- » Curved hem

916F, 917F

- » Relaxed collar

916M, 917M

- » Button down collar
- » Left chest pocket

CLASSIC TWILL SHIRT

916 • 917



916M
Men's Long Sleeve
Classic Twill Shirt
FIT Classic • **SIZES** S-4XL



916F
Ladies' Long Sleeve
Classic Twill Shirt
FIT Classic • **SIZES** XS-2XL



917M
Men's Short Sleeve
Classic Twill Shirt
FIT Classic • **SIZES** S-4XL



917F
Ladies' Short Sleeve
Classic Twill Shirt
FIT Classic • **SIZES** XS-2XL



LAUNDRY CARE
40°C machine wash, tumble dry



MATERIAL / WEIGHT
100% Cotton Twill
130g/m²

PACKING
Pack 1/ Carton 12

ROLL SLEEVE TWILL SHIRT

918 • 919



918M

Men's Roll Long Sleeve
Fitted Twill Shirt
FIT Fitted • **SIZES** S-4XL



918F

Ladies' Roll 3/4 Sleeve
Fitted Twill Shirt
FIT Fitted • **SIZES** XS-2XL



919M

Men's Roll Short Sleeve
Fitted Twill Shirt
FIT Fitted • **SIZES** S-4XL



919F

Ladies' Roll Short Sleeve
Fitted Twill Shirt
FIT Fitted • **SIZES** XS-2XL



Young and stylish - this roll-sleeve shirt with patch pockets is the perfect choice wherever a fresh and casual appearance is required.

- » Relaxed collar
- » Dyed-to-match grosgrain fabric patches at side seam hem
- » Dyed-to-match grosgrain back neck tape
- » Two chest pockets
- » Button on outer sleeve and fabric tab on inside of sleeve allow it to be rolled up and tabbed
- » Square edged adjustable cuffs (918M/F)
- » Curved hem



LAUNDRY CARE
40°C machine wash, tumble dry

30

36

XW

3M

FN

MATERIAL / WEIGHT

100% Cotton Twill
130g/m²

PACKING

Pack 1/ Carton 12



962M
Men's Long Sleeve Tailored
Herringbone Shirt
Page 42

ONE



962M/F

HER

The popular herringbone fabric, a variation of twill, can be identified by its vibrant surface with a characteristic zigzag pattern. To achieve this, the high-quality yarn is made to change direction at regular intervals, creating the unique texture.

At Russell, we use a very dense weave. This ensures that the shirts and blouses are opaque, durable and warm. The quick-drying herringbone fabric is very easy to care for, making it the perfect choice for your modern work look.

964M



Our Herringbone shirt is versatile and hard-wearing providing you with the ideal combination of style and durability.

- » Easy Care
- » Longer fit
- » Narrow placket
- » No show through
- » Curved hem

964M

- » Under-Button-Down collar
- » Fashionable contrasts: cuffs (inside), collar (inside) with contrast piping
- » Contrast edging around lower button placket
- » Contrasting colours at cuff buttonhole and lowest buttonhole
- » Darts at back improve fit

962F/963F

- » Neat modern collar
- » Darts at chest, front and back hem
- » Stylish, narrow cuffs with single button fastening (962F)

962M/963M

- » Stiffened Kent boned collar
- » Rounded 2 button adjustable cuffs, with option for cuff links (962M)

HERRINGBONE SHIRT

964 · 962 · 963

964M

Men's Long Sleeve Tailored Contrast Herringbone Shirt

FIT Tailored
SIZES S-4XL



962M

Men's Long Sleeve Tailored Herringbone Shirt

FIT Tailored
SIZES S-4XL



962F

Ladies' Long Sleeve Tailored Herringbone Shirt

FIT Tailored
SIZES XS-4XL



963M

Men's Short Sleeve Tailored Herringbone Shirt

FIT Tailored
SIZES S-4XL



963F

Ladies' Short Sleeve Tailored Herringbone Shirt

FIT Tailored
SIZES XS-4XL



EC EASY CARE

LAUNDRY CARE
40°C machine wash, tumble dry

964M



962M, 962F, 963M, 963F



MATERIAL / WEIGHT
84% Cotton, 16% Polyester Herringbone
White: 125g/m², Colours: 130g/m²

PACKING
Pack 1/ Carton 12





KNITWEAR



RUSSELL SINCE 1902
COLLECTION

Modern easy care crew neck pullover.
Either classic with a shirt or contemporary
with a T-shirt - always a good look.

- » Classic Fit
- » Contemporary styling
- » Fully fashioned
- » Elastane on ribbed cuffs and waistband
trim to retain shape and smart
appearance
- » Quick to dry and Easy care

CREW-NECK KNITTED PULLOVER

717



717M

Men's Crew Neck
Knitted Pullover
SIZES XXS-4XL



717F

Ladies' Crew Neck
Knitted Pullover
SIZES XXS-4XL



LAUNDRY CARE
40°C machine wash, tumble dry

36

CM

FN

D2

MC

MATERIAL / WEIGHT

50% Cotton, 50% Acrylic CottonBlend
275g/m²

PACKING

Pack 1/ Carton 12

V-NECK KNITTED PULLOVER

710



710M
Men's V-Neck
Knitted Pullover
SIZES XXS-4XL



710F
Ladies' V-Neck
Knitted Pullover
SIZES XXS-4XL

The classic, easy care V-neck pullover
– for stylish layering over a shirt or T-shirt.

- » Classic Fit
- » Contemporary styling
- » Fully fashioned
- » Elastane on ribbed cuffs and waistband trim to retain shape and smart appearance
- » Quick to dry and Easy care

BESTSELLER

Extensive size range



LAUNDRY CARE

40°C machine wash, tumble dry

710M



710F



MATERIAL / WEIGHT

50% Cotton, 50% Acrylic CottonBlend
275g/m²

PACKING

Pack 1/ Carton 12

The classic, contemporary styled, easy care V-neck cardigan – a lightweight, elegant outer layer with a shirt or T-shirt.

- » Classic Fit
- » Contemporary styling
- » Fully fashioned
- » Elastane on ribbed cuffs and waistband trim to retain shape and smart appearance
- » Quick to dry and Easy care
- » Dyed-to-match buttons

V-NECK KNITTED CARDIGAN

715



715M
Men's V-Neck
Knitted Cardigan
SIZES XXS-4XL



715F
Ladies' V-Neck
Knitted Cardigan
SIZES XXS-4XL



LAUNDRY CARE
40°C machine wash, tumble dry

715M



715F



MATERIAL / WEIGHT
50% Cotton, 50% Acrylic CottonBlend
275g/m²

PACKING
Pack 1/ Carton 12

V-NECK SLEEVELESS KNITTED PULLOVER & CARDIGAN

716 · 719



716M

V-Neck Sleeveless
Knitted Pullover
SIZES XXS-4XL



719M

Men's V-Neck Sleeveless
Knitted Cardigan
SIZES XXS-4XL

716M

Sleeveless version of our classic, easy care V-neck pullover – for stylish layering over a shirt or T-shirt.

719M

This Sleeveless version of our classic, contemporary styled, easy care V-neck cardigan was designed with layering in mind – either classic over shirt or more casual over T-shirt.

- » Classic Fit
- » Contemporary styling
- » Fully fashioned
- » Elastane on ribbed cuffs and waistband trim to retain shape and smart appearance
- » Refined button up fastening with inside facing and dyed-to-match buttons
- » Quick to dry and Easy care



LAUNDRY CARE

40°C machine wash, tumble dry

716M



719M



MATERIAL / WEIGHT

50% Cotton, 50% Acrylic CottonBlend
275g/m²

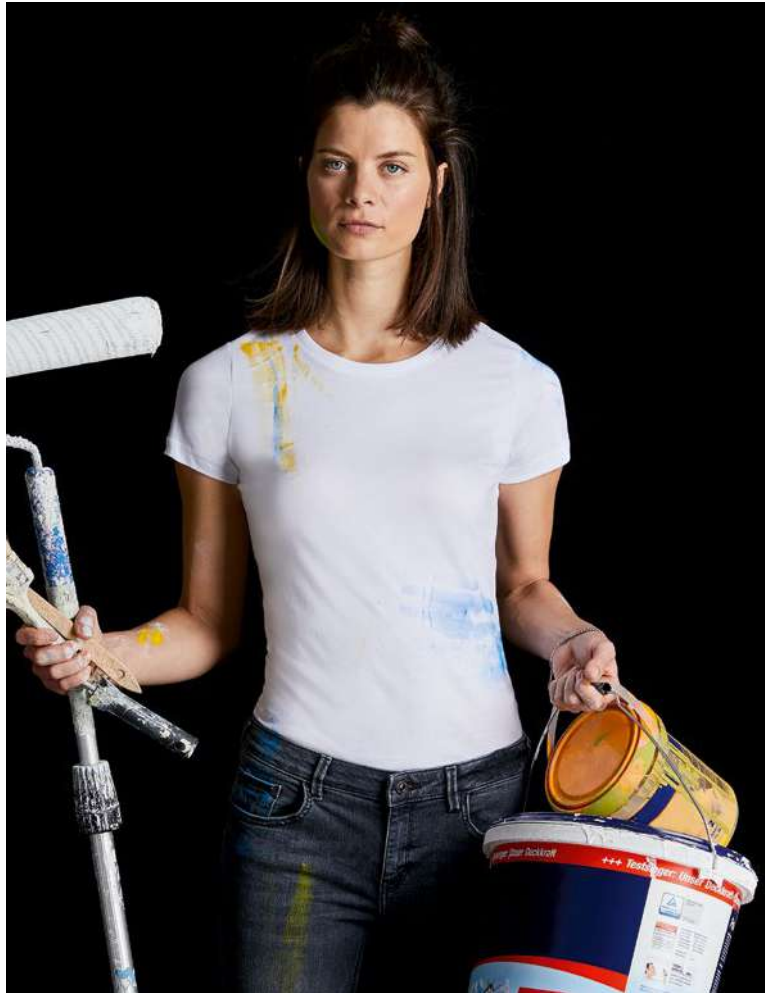
PACKING

Pack 1/ Carton 12



T-SHIRTS





OUR T-SHIRT RANGE

PURE ORGANIC
100% ORGANIC COTTON



PURE ORGANIC T
108M/F/B



PURE ORGANIC V-NECK T
103M/F



PURE ORGANIC HEAVY T
118M/F



PURE ORGANIC LONG SLEEVE T
100M

HD
65% POLYESTER
35% COTTON



HD T
165M/F/B



HENLEY HD T
168M

ESSENTIALS
100% COTTON



SLIM T
155M/F/B



CLASSIC T
180M/B



CLASSIC HEAVYWEIGHT T
215M

WORKWEAR



HEAVY DUTY WORKWEAR T
010

WHY RUSSELL T-SHIRTS?

At Russell, it is our goal to provide you with the right T-shirt for every purpose. Whether you need T-shirts for promotions, workwear, leisure or for your everyday work uniform – our collection has the right styles for your requirements.

The high-quality materials of our T-shirts are perfectly suited for prints and finishes. No matter what technique you use in your design, you will get great, long-lasting results.

Don't forget to check out our timeless new models made of 100% organic cotton: the Pure Organic T-shirts.



ADVANTAGES FOR COMPANIES & TEAMS



Single jersey fabric (150 to 215 g/m²), ringspun cotton yarn from carded to combed



100% organic cotton, cotton or cotton blend



Sizes from children's 3-4 years, adults from XS to 4XL



Fitted or classic fit, with a feminine cut for women, modern fit for children



High quality standards, excellent finish, great for promotions and company or team uniforms



Easy care, suitable for tumble drying, often washable up to 60°C, robust

YOUR ADVANTAGES

ADVANTAGES FOR DECORATORS



Label-free design (Russell Pure Organic, HD Collection)



Combed ringspun cotton with a high weave density and smooth surface for excellent printing



Cotton blend fabric 65/35 suitable for sublimation, also on marl colours (HD Collection)

PURE organic



"organic"
Certified by Ecocert Greenlife
210865

This is a GOTS certified product before any embellishment is done. If not treated or decorated in compliance with GOTS guidelines, the logo and all reference to GOTS must be removed.

103M/F
Pure Organic
V-Neck T
page 60



pure organic®
organic

High-quality, timelessly modern and sustainable. The Pure Organic T sets new standards in terms of quality, fit and printability. A refined basic for every look.

- » Contemporary shaped fit
- » Single Jersey
- » 100% Organic combed ringspun cotton
- » Custom-developed shoulder to shoulder tape offering greater stability and an elegant look
- » Label free: Small size label in the neck (incl. product number)
- » Narrow collar band with LYCRA®
- » Side seams improve fit
- » Comfortable cool and light texture
- » Smooth surface for best print results
- » GOTS certified

PURE ORGANIC T & LONG SLEEVE T

108 • 100



108M
Men's Pure Organic T
SIZES XS-3XL



100M
Pure Organic Long Sleeve T
SIZES XS-3XL



This is a GOTS certified product before any embellishment is done. If not treated or decorated in compliance with GOTS guidelines, the logo and all reference to GOTS must be removed.



LAUNDRY CARE
40°C machine wash, tumble dry

108M, 108F



108B



100M



108F
Ladies' Pure Organic T
SIZES XS-2XL



108B
Children's Pure Organic T
SIZES 3-14 Years

MATERIAL / WEIGHT

100% Combed Ringspun Cotton (organic);
Light Oxford:
97% Combed Ringspun Cotton (organic), 3% Viscose
160g/m²

PACKING

Pack 12/ Carton 72
108B, 100M: Pack 6/ Carton 36



High-quality, timelessly modern and sustainable. The Pure Organic V-Neck T sets new standards in terms of quality, fit and printability. A refined basic for every look with a classic V-neck and the perfect addition to the Pure Organic Collection.

- » Contemporary shaped fit
- » Single Jersey
- » 100% Organic combed ringspun cotton
- » Custom-developed shoulder to shoulder tape offering greater stability and an elegant look
- » Label free: Small size label in the neck (incl. product number)
- » Classic narrow V-neck with cotton/LYCRA® rib
- » Side seams improve fit
- » Comfortable cool and light texture
- » Smooth surface for best print results
- » GOTS certified

PURE ORGANIC V-NECK T

103



103M
Men's Pure Organic V-Neck T
SIZES XS-3XL



103F
Ladies' Pure Organic V-Neck T
SIZES XS-2XL



This is a GOTS certified product before any embellishment is done. If not treated or decorated in compliance with GOTS guidelines, the logo and all reference to GOTS must be removed.



LAUNDRY CARE
40°C machine wash, tumble dry



MATERIAL / WEIGHT
100% Combed Ringspun Cotton (organic);
160g/m²

PACKING
Pack 6/Carton 36

PURE ORGANIC HEAVY T

118



118M

Men's Pure Organic Heavy T
SIZES XS-3XL



118F

Ladies' Pure Organic Heavy T
SIZES XS-2XL

High-quality, timelessly modern and sustainable. The Pure Organic Heavy T sets new standards in terms of quality, fit and printability. A refined basic for every look. Now also available with a heavier weight without losing the comfortable cool texture.

- » Contemporary shaped fit
- » Single Jersey
- » 100% Organic combed ringspun cotton
- » Custom-developed shoulder to shoulder tape offering greater stability and an elegant look
- » Label free: Small size label in the neck (incl. product number)
- » Narrow collar band with LYCRA® and single top stitch
- » Side seams improve fit
- » Comfortable cool texture despite heavier weight
- » Smooth surface for best print results
- » GOTS certified



This is a GOTS certified product before any embellishment is done. If not treated or decorated in compliance with GOTS guidelines, the logo and all reference to GOTS must be removed.



LAUNDRY CARE

40°C machine wash, tumble dry



MATERIAL / WEIGHT

100% Combed Ringspun Cotton (organic);
190g/m²

PACKING

Pack 6/ Carton 36




**65% POLYESTER
35% COMBED
RINGSPUN
COTTON**

165B



LABEL FREE
Removable, adhesive label



A full-page photograph of a man with dark, curly hair and a beard, smiling and leaning against a tall, grey, rectangular panel. He is wearing a dark grey, short-sleeved t-shirt, blue denim jeans with the cuffs rolled up, and dark blue suede loafers with white soles. His right hand is in his pocket, and his left hand is resting on the top edge of the panel. The background is a plain, light grey wall.

165M
Men's HD T
Page 67

Versatile - the casual HD Henley T with its characteristic button placket. A perfect blend of sportiness and chic.

- » Contemporary slim fit
- » Buttons with fashionable colour contrast
- » Contrast neck tape with decorative stitching and placket inside underlap in denim look
- » Side seams improve fit
- » Removable, adhesive neck label
- » Decorative overlock seams at shoulders and armholes

HENLEY HD T

168



168M
Men's Henley HD T
SIZES XS-3XL

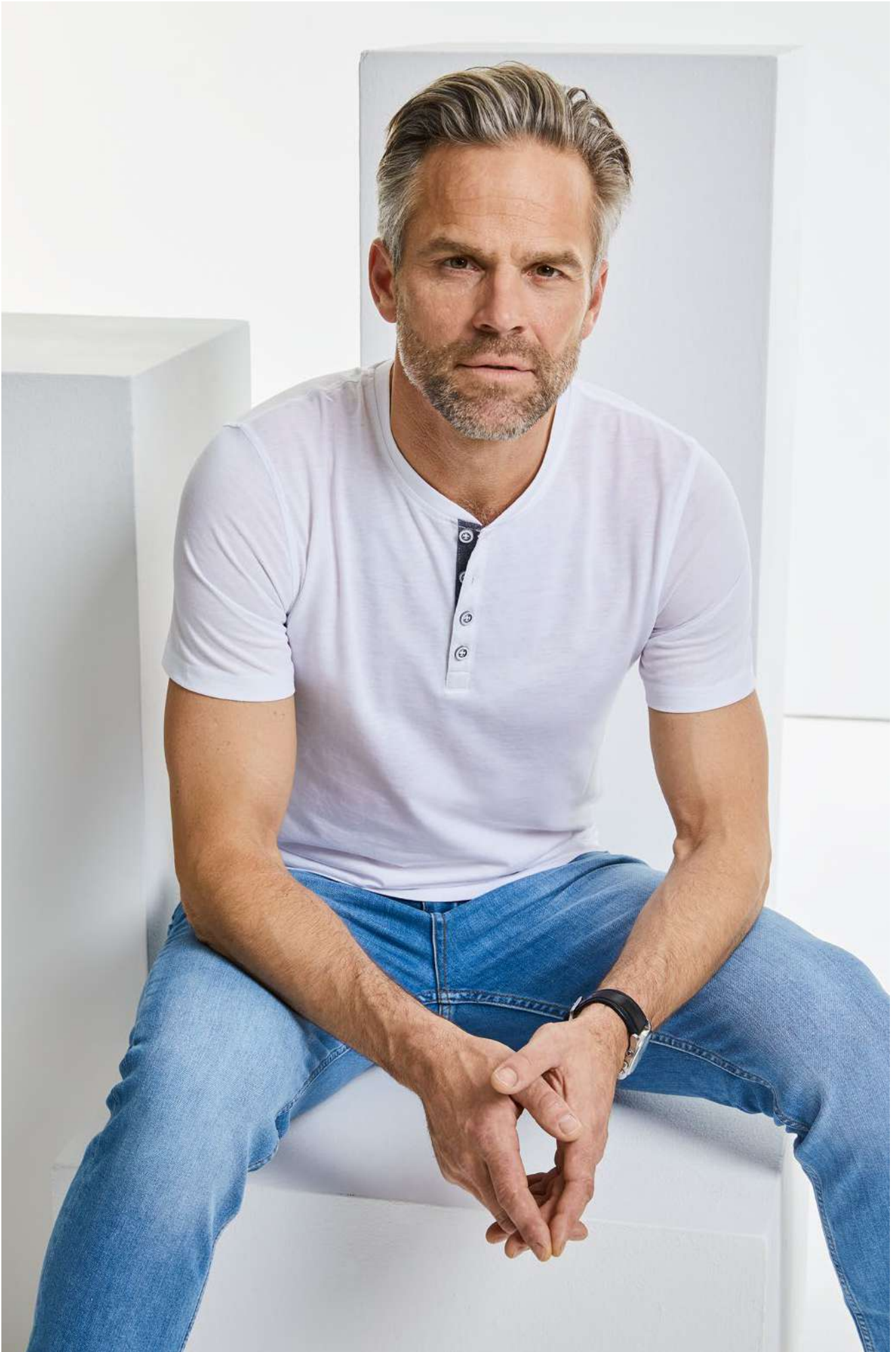


LAUNDRY CARE
40°C machine wash, tumble dry



MATERIAL / WEIGHT
65% Polyester, 35% Combed Ringspun Cotton
White: 155g/m², Colours: 160g/m²

PACKING
Pack 6/Carton 36





HD T

165



165M
Men's HD T
SIZES XS-3XL



165F
Ladies' HD T
SIZES XS-2XL



165B
Children's HD T
SIZES 5-14 Years

Our highly-wearable HD T comes in a classic crew neck with a soft feel and a great slim fit that looks effortlessly stylish whether worn solo or layered.

- » Crew neck with single needle stitching
- » PolyCotton mix
- » Shoulder to shoulder neck tape
- » Side seamed
- » Removable, adhesive neck label
- » Narrow neck rib



LAUNDRY CARE
40°C machine wash, tumble dry



MATERIAL / WEIGHT
65% Polyester, 35% Combed Ringspun Cotton
White: 155g/m², Colours: 160g/m²

PACKING
Pack 6/ Carton 36

180M
Classic T
Page 72

ESSENT

100% COMBED RINGSPUN COTTON



RIALS





BESTSELLER

Lightweight material in
contemporary fit

SLIM T

155



155M
Men's Slim T
SIZES S-2XL



155F
Ladies' Slim T
SIZES XS-XL



155B
Children's Slim T
SIZES 1-14 Years

Our 155 Slim T is designed to be slim fitting, but not too tight. It also has extra length to create an even slimmer, very contemporary look.

- » Long slim fit
- » Single Jersey
- » Back neck tape
- » 1x1 rib knit collar with top stitch
- » Tubular construction
- » Side seamed for a feminine shape (155F)



LAUNDRY CARE
40°C machine wash, tumble dry



MATERIAL / WEIGHT

100% Ringspun Cotton
Light Oxford: 93% Cotton, 7% Viscose
White: 140g/m², Colours: 145g/m²

PACKING

Pack 10/Carton 100

The Classic T-shirt that sets the standard for fabric and production quality, durability and wearer comfort.

- » Classic Fit
- » Single Jersey
- » Shoulder to shoulder neck tape
- » 1x1 rib knit collar with top stitch
- » Name label (180B)
- » Tubular construction (Light Oxford colour has side seamed construction) (180M)

CLASSIC T

180



180M
Classic T
SIZES XS-4XL

BESTSELLER

The benchmark for durability & comfort



LAUNDRY CARE
40°C machine wash, tumble dry

180M

XS not available in Convoy Grey, 3XL & 4XL only available in Black, Bottle Green, Bright Royal, French Navy and White

180B

not available in Convoy Grey, Light Oxford



180B
Children's Classic T
SIZES 1-12 Years

MATERIAL / WEIGHT

100% Ringspun Cotton
Light Oxford: 93% Cotton, 7% Viscose
White: 175g/m², Colours: 180g/m²

PACKING

Pack 12/Carton 72

CLASSIC HEAVYWEIGHT T

215



215M
Classic Heavyweight T
SIZES S-2XL

Quality, heavyweight T-shirt, designed with real attention to detail.

- » Classic Fit
- » Single Jersey
- » Shoulder to shoulder neck tape
- » 1x1 rib knit collar with top stitch
- » Tubular construction



LAUNDRY CARE
40°C machine wash, tumble dry



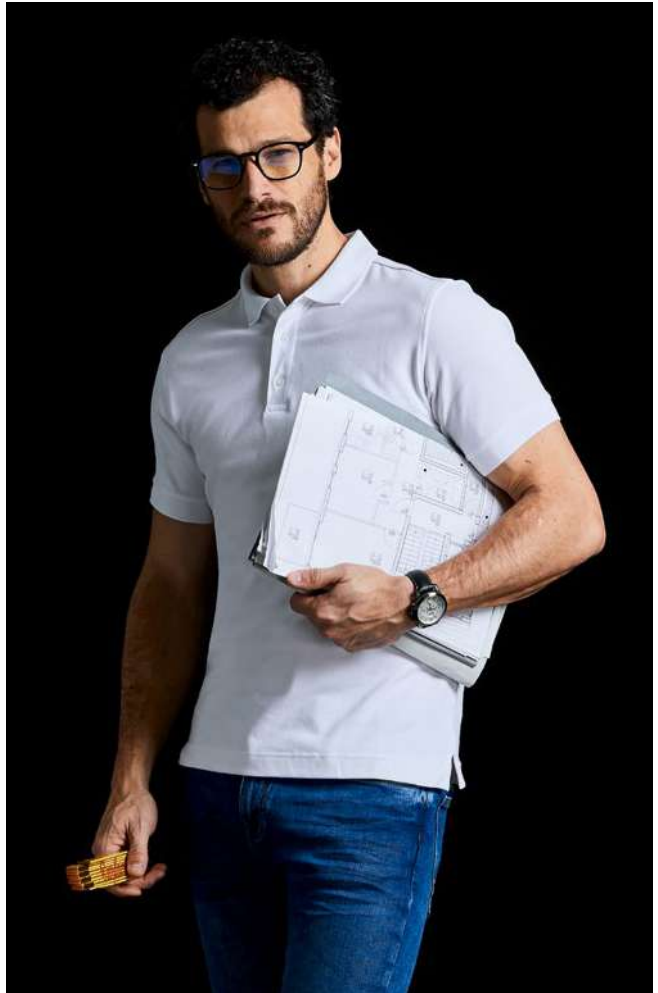
MATERIAL / WEIGHT
100% Combed Ringspun Cotton
White: 210g/m², Colours: 215g/m²

PACKING
Pack 12/Carton 72



POLOS





OUR POLO RANGE

PURE ORGANIC
100% ORGANIC COTTON



PURE ORGANIC POLO
508M/F

HD
65% POLYESTER
35% COTTON



HD RAGLAN POLO
565M

STRETCH
5% LYCRA®



**STRETCH POLO
FITTED**
566M/F



**STRETCH POLO
TAILORED**
567M/F

ESSENTIALS
100% COTTON



CLASSIC COTTON POLO
569M/F/L



ULTIMATE COTTON POLO
577M/F

WORKWEAR



**HEAVY DUTY WORKWEAR
POLO**
011

ESSENTIALS
POLYCOTTON



POLYCOTTON POLO
539M/F/B



**HARDWEARING
POLYCOTTON POLO**
599M/B

WHY RUSSELL POLO SHIRTS?

The polo shirt is a classic choice for work uniforms. We let you decide if you prioritise a fashionable, elegant look or if it's all about robust quality. Our Russell range has the right model for every requirement.

Our cotton and cotton blend styles number

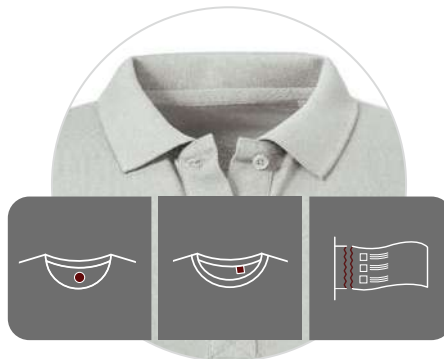
amongst our most tried-and-tested bestsellers. Our single jersey polo shirts in particular promise a fashionable look with their stylish details.

We also have a new addition in our collection for environmentally conscious companies: the Pure Organic Polo made of 100% organic cotton!

ADVANTAGES FOR DECORATORS



Classic, fine or honeycomb piqué for optimal embroidery and printing



Label-free design (Russell Pure Organic, HD Collection)



Cotton blend fabric 65/35 suitable for sublimation, also on marl colours (HD Collection)

ADVANTAGES FOR COMPANIES & TEAMS



Classic, fine or honeycomb piqué as well as single jersey from 180 to 215 g/m²



Fitted or classic fit, with a feminine cut for women, modern fit for children



100% organic cotton, 100% cotton or cotton blend, stretch fabrics



High quality standards, excellent finish, great for promotions and company or team uniforms



Sizes from children's 3-4 years, adults from XS to 6XL



Easy care, suitable for tumble drying, often washable up to 60°C, robust



pure organic®



This is a GOTS certified product before any embellishment is done. If not treated or decorated in compliance with GOTS guidelines, the logo and all reference to GOTS must be removed.

"organic"
Certified by Ecocert Greenlife
210865

508F
Ladies' Pure Organic Polo
Page 81

pure
organic



russell

pure organic®

PURE ORGANIC POLO

508



508M

Men's Pure Organic Polo
SIZES S-3XL



508F

Ladies' Pure Organic Polo
SIZES XS-2XL

Our 100% Organic Piqué quality raises the bar in the areas of sustainability, quality, fit and printability. New sophisticated decorative details provide our polos with a smart look.

- » Contemporary shaped fit
- » Piqué
- » 100% organic combed ringspun cotton
- » Delicate rip width at sleeve hem
- » Distinguished front placket with cross stitched element to provide best look and better placket stability
- » Smooth and even surface for best print results
- » Small fashionable detail at side seam
- » Label free: Small size label in the neck (incl. product number)
- » Matching herringbone tape at inside back neck
- » Side seams improve fit
- » Dyed-to-match buttons
- » GOTS certified



This is a GOTS certified product before any embellishment is done. If not treated or decorated in compliance with GOTS guidelines, the logo and all reference to GOTS must be removed.



LAUNDRY CARE

40°C machine wash, tumble dry



MATERIAL / WEIGHT

100% Combed Ringspun Cotton (organic);
215g/m²

PACKING

Pack 6/ Carton 36

HD RAGLAN POLO

565

Perfect for combining – the HD Raglan Polo with 3-button placket and modern contrasts. Proven HD quality and perfectly fitting raglan sleeves make every outfit wonderfully comfortable.

- » Contemporary fit and modern design
- » Heavy Single Jersey
- » Buttons with fashionable colour contrast
- » Contrast neck tape with decorative stitching and placket inside underlap in denim look
- » Side vents with facings in denim look
- » Side seams improve fit
- » Decorative overlock seams at sleeves
- » Narrow cuff
- » Removable, adhesive neck label



565M
Men's HD Raglan Polo
SIZES XS-3XL



LAUNDRY CARE
40°C machine wash, tumble dry



MATERIAL / WEIGHT
65% Polyester, 35% Combed Ringspun Cotton
180g/m²

PACKING
Pack 6/Carton 36





STRETCH POLO

FITTED & TAILORED

566 · 567



566M

Men's Fitted Stretch Polo
FIT Fitted • **SIZES** S-3XL



566F

Ladies' Fitted Stretch Polo
FIT Fitted • **SIZES** XS-2XL



567M

Men's Tailored Stretch Polo
FIT Tailored • **SIZES** S-3XL



567F

Ladies' Tailored Stretch Polo
FIT Tailored • **SIZES** XS-2XL

The high quality Stretch Polo in 2 variants. The slim fit 566 Stretch Polo with contrasting buttons and the tailored fit 567 Stretch Polo with dyed-to-match buttons set the tone. The fine pique in cotton LYCRA® quality meets the highest standards of quality and comfort.

- » Slim leaf collar
- » Ribbed cuffs
- » Strip of self-colour fabric along shoulder seam
- » Shorter side vents with herringbone tape
- » Soft handfeel
- » Slimmer, 4 button placket (566F/567F)

566M/F

- » Contrast buttons

567M/F

- » Dyed-to-match buttons
- » Label free: Small size label in the neck (incl. product number)



LAUNDRY CARE
 40°C machine wash, tumble dry

566M, 566F



567M, 567F



MATERIAL / WEIGHT
 95% Combed Ringspun Cotton; 5% LYCRA®;
 Light Oxford: 88% Combed Ringspun Cotton,
 7% Viscose, 5% LYCRA®
 White: 205g/m², Colours: 210g/m²

PACKING
 Pack 6/ Carton 36

Our 569 cotton polo delivers on value without sacrificing on quality.

- » Classic fit with side vents
- » Side vents for ease of fit
- » Reinforced shoulder seams with neck tape
- » Open sleeve with twin needle hem (569F)
- » Classic style flat knit cuffs (569M)
- » 1x1 rib cuffs (569L)
- » Twin needle hem at bottom for added stability

CLASSIC COTTON POLO

569



569M
Men's Classic Cotton Polo
SIZES XS-4XL



LAUNDRY CARE
40°C machine wash, tumble dry

569M, 569F

569M XS only available in French Navy and White. 3XL & 4XL only available in Black, French Navy and White



569L

XS only available in French Navy and White



569F
Ladies' Classic Cotton Polo
SIZES XS-2XL



569L
Long Sleeve Classic Cotton Polo
SIZES XS-2XL

MATERIAL / WEIGHT

100% Ringspun Cotton
White: 195g/m², Colours: 200g/m²

PACKING

Pack 6/Carton 36

ULTIMATE COTTON POLO

577



577M

Men's Ultimate Cotton Polo

SIZES XS-4XL



577F

Ladies' Ultimate Cotton Polo

SIZES XS-2XL

When only 100% cotton will do, our 577 Ultimate Cotton Polo is the natural choice. Our fabric is pre-washed so it will hold its size and shape for longer – making it extremely well suited to team wear. We use finer, thinner yarns along with the double-tuck pattern to create an exceptionally stable fabric with a very dense knit. The result is a softer hand-feel and a finer surface that's ideal for more detailed embroidery.

- » Classic Fit
- » Contemporary cut
- » Fine honeycomb pique structure
- » Reinforced shoulder seams with herringbone neck tape
- » Side vents with internal herringbone taping for added stability and better fit
- » Sleeves with twin needle hem (577F)
- » Classic style flat knit cuffs (577M)
- » Pre-shrunk and suitable for wash up to 60°C



LAUNDRY CARE

60°C machine wash, tumble dry



MATERIAL / WEIGHT

100% Combed Ringspun Cotton
White: 210g/m², Colours: 215g/m²

PACKING

Pack 6/ Carton 36

Our classic polo shirt uses a unique double yarn. With two slim fibres this unique double construction creates a very durable and hardwearing fibre. Yet it also gives a softer, more cotton-like feel to the finished fabric, and an extremely stable surface for even the most intricate decoration and embroidery.

- » Classic Fit
- » Fine honeycomb pique structure
- » Double yarn construction
- » Reinforced shoulder seams with neck tape
- » Classic style flat knit cuffs (539M, 539B)
- » Open sleeve with twin needle hem (539F)
- » Name label (539B)
- » Twin needle hem at bottom for added stability

CLASSIC POLYCOTTON POLO

539

BESTSELLER

Excellent value for your money



539M

Men's Classic Polycotton Polo
SIZES XS-6XL



LAUNDRY CARE
40°C machine wash, tumble dry

539M

3XL-4XL only available in Bottle Green, Black, Bright Royal, Classic Red, French Navy, Light Oxford and White. 5XL & 6XL only available in Black, Bright Royal, French Navy and White.



539F

3XL & 4XL only available in Bottle Green, Bright Royal and French Navy



539B



539F

Ladies' Classic Polycotton Polo
SIZES XS-4XL



539B

Children's Classic Polycotton Polo
SIZES 1-12 Years

MATERIAL / WEIGHT

65% Polyester, 35% Ringspun Cotton
White: 210g/m², Colours: 215g/m²

PACKING

Pack 6/Carton 36

HARDWEARING POLYCOTTON POLO

599



599M

Hardwearing Polycotton Polo

SIZES XS-6XL



599B

Children's Hardwearing Polycotton Polo

SIZES 3-12 Years

The hardwearing, (almost) indestructible all-round polo is the smarter choice.

- » Classic fit with side vents
- » Side vents for ease of fit
- » Reinforced shoulder seams with neck tape
- » Flat knit collar and cuffs with double ripple effect
- » Name label (599B)
- » Twin needle hem at bottom for added stability



LAUNDRY CARE

60°C machine wash, tumble dry

599M

5XL & 6XL only available in Black, Bottle Green, Bright Royal, French Navy and White



599B



MATERIAL / WEIGHT

65% Polyester, 35% Ringspun Cotton
White: 210g/m², Colours: 215g/m²

PACKING

Pack 6/ Carton 36





SWEATSHIRTS & JOG PANTS





OUR SWEATSHIRT RANGE

PURE ORGANIC
100% ORGANIC COTTON



PURE ORGANIC REVERSIBLE SWEAT
208M



PURE ORGANIC HIGH COLLAR HOODED SWEAT
209M

AUTHENTIC
80% COTTON
20% POLYESTER



AUTHENTIC SWEAT
262M & 271B 265M/F/B 266M/F/B 267M/F 270M



AUTHENTIC JOG PANTS
268M/F



AUTHENTIC MELANGE SWEAT
260M 261M/F 263M/F 264M 269M

HD
65% POLYESTER
35% COTTON



HD SWEAT
281M/F 282M/F 284M/F

ESSENTIALS
50% COTTON
50% POLYESTER



CLASSIC SWEATSHIRTS
762M/B 272M/B 273M/B 575M/B



SWEAT PANTS
750B

WHY RUSSELL SWEATSHIRTS?

Who can offer you better sweatshirts than the people who invented them?

We knew all the way back in the early 1920s how important comfort and durability are for this classic.

Since then, we have continuously improved on our design and perfected our quality standards.

You can choose between elegant, heavy materials or loose, relaxed styles. Every Russell sweatshirt is comfortable to wear and a pleasure when it comes to printing and finishing.

Our Pure Organic Sweatshirts are new in the range – feel good and look great in premium 100% organic cotton fabric.



ADVANTAGES FOR COMPANIES & TEAMS



Unbrushed French/twill terry or brushed sweatshirt fabric (250 to 300 g/m²); three-layered Authentic sweatshirt fabric



100% organic cotton, various cotton blends



Sizes from children's 90, adults from XS to 4XL



Fitted or classic fit, workwear cut, with a feminine cut for women, modern fit for children



High quality standards, excellent finish, great for promotions and company or team uniforms



Easy care, suitable for tumble drying, often washable up to 60 °C, robust, low shrinkage values

YOUR ADVANTAGES

ADVANTAGES FOR DECORATORS



Label free design (Russell Pure Organic, HD Collection, Authentic melange sweatshirt fabrics)



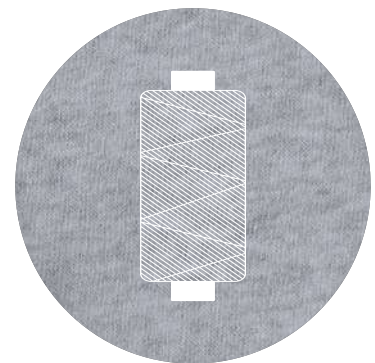
Half moon (double yoke) at the nape of the neck, optimal for rebranding (Authentic melange sweatshirt fabrics, Russell Pure Organic)



Three-layered sweatshirt fabric structure with a 100% cotton surface for optimal print results (Authentic Collection)



Cotton blend fabric 65/35 suitable for sublimation, also on marl colours (HD Collection)



The use of very high-grade yarn in the outer layer as well as a high weave density make the surface optimal for printing and finishing



pure organic®

208M
Pure Organic
Reversible Sweat
page 98

pure organic

209M



208M



"organic"
 Certified by Ecocert Greenlife
 210865

This is a GOTS certified product before any embellishment is done. If not treated or decorated in compliance with GOTS guidelines, the logo and all reference to GOTS must be removed.

Our ultra-soft 100% Organic Twill Terry Sweat raises the bar in the areas of sustainability, quality, fit and printability. For an individual look you can wear this 100% organic cotton garment reversed - depending on how you feel.

- » Contemporary fit and modern design
- » Unbrushed Twill-Terry
- » 100% organic combed ringspun cotton
- » Label free on neck: inner small pocket on hem is hiding size and care labels
- » Ribbed cuffs, neckline and body hem with LYCRA®
- » Fashionable detail attached above hem
- » Soft handfeel
- » Matching herringbone tape at inside back neck
- » Overlock workmanship that provides a clean finishing for reversable wearing
- » GOTS certified

PURE ORGANIC REVERSIBLE SWEAT

208



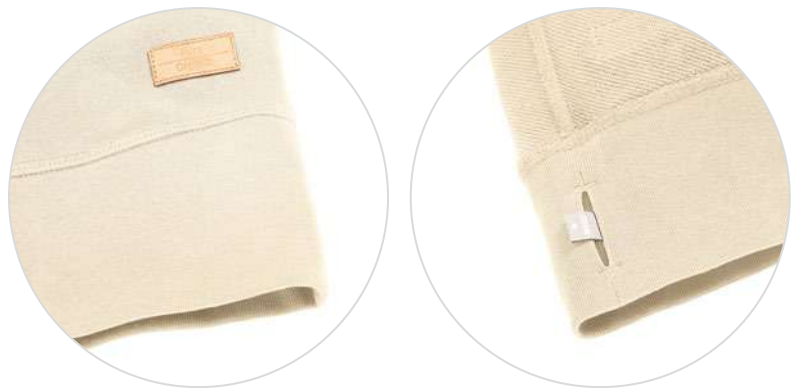
208M
Pure Organic Reversible Sweat
SIZES XS-3XL



This is a GOTS certified product before any embellishment is done. If not treated or decorated in compliance with GOTS guidelines, the logo and all reference to GOTS must be removed.



LAUNDRY CARE
40°C machine wash, tumble dry (low temperature)



MATERIAL / WEIGHT
100% Combed Ringspun Cotton (organic);
300g/m²

PACKING
Pack 3/Carton 24

PURE ORGANIC HIGH COLLAR HOODED SWEAT

209



209M

Pure Organic
High Collar Hooded Sweat
SIZES XS-3XL



Our ultra-soft 100% Organic Twill Terry Hoodie raises the bar in the areas of sustainability, quality, fit and printability. The contemporary high collar combined with new modern chunky drawcords polished with decorative applications on their ends gives the whole style a very sophisticated look.

- » Contemporary fit and modern design
- » Unbrushed Twill-Terry
- » Label free: Small size label in the neck (incl. product number)
- » Elastane on ribbed cuffs and waistband trim to retain shape and smart appearance
- » Fashionable detail attached above hem
- » All cover seams are double-stitched for perfect fixation
- » Matching herringbone tape at inside back neck
- » Self-fabric welt pockets
- » Robust 100% cotton drawstrings with contrast details
- » Perfect high collar hood construction with two piece workmanship for better print positioning
- » Soft lined hood for higher comfort and a clean look from inside
- » Half moon neck insert (locker patch) for individualisation
- » GOTS certified



This is a GOTS certified product before any embellishment is done. If not treated or decorated in compliance with GOTS guidelines, the logo and all reference to GOTS must be removed.



LAUNDRY CARE

40°C machine wash, tumble dry (low temperature)



MATERIAL / WEIGHT

100% Combed Ringspun Cotton (organic);
300g/m²

PACKING

Pack 3/ Carton 24



**80% COMBED
RINGSPUN COTTON
20% POLYESTER**

(EXCEPT MELANGE STYLES)



**3-LAYER
CONSTRUCTION**



264M
Authentic Baseball
Sweat
page 108

OUTLET

AUTHENTIC MELANGE SWEAT

260

The best sweatshirt on the market, now also available in fashionable melange colours. Consisting of our proven, high-quality 3-layer construction and a V-insert at the neckline, the result is a modern, high-quality sweatshirt that meets all fashion requirements – whether business casual or relaxing in your free time.

- » Straighter cut for a modern look
- » Outer 100% cotton layer provides the best surface for decoration
- » Half moon neck insert for individualisation
- » Label free: Small size label in the neck (incl. product number)
- » Fashionable V-insert with decorative seam at collar
- » Herringbone neck tape for comfort and stability
- » Fashionable offset shoulder seams
- » Side seams improve fit
- » Elastane on ribbed cuffs and waistband trim to retain shape and smart appearance
- » Cover seam armholes, cuffs and hem



260M
Authentic Melange Sweat
SIZES XS-3XL



LAUNDRY CARE

40°C machine wash, tumble dry (low temperature)



MATERIAL / WEIGHT

75% Combed Ringspun Cotton, 21% Polyester, 4% Viscose;
Carbon Melange: 77% Cotton, 23 % Polyester;
Outer fabric 100% Cotton (3 layer fabric)
280g/m²

PACKING

Pack 3/Carton 24

THE AUTHENTIC SWEAT & KIDS AUTHENTIC RAGLAN SWEAT

262 · 271



BESTSELLER

Superior fabric for best print results

262M

The Authentic Sweat

SIZES XS-4XL



271B

Children's Authentic Raglan Sweat

SIZES 3-14 Years

Russell's Authentic sweats are built in three layers. On the inside a fluffy mix of cotton and polyester gives comfort and warmth. A middle layer that's 100% polyester adds bulk. The outer layer is 100% cotton which feels good – and gives the best surface for decoration.

262M

- » Straighter cut for a modern look
- » Outer 100% cotton layer provides the best surface for decoration
- » Herringbone neck tape for comfort and stability
- » Slimmer shoulders and leaner arms
- » Wider hem and cuff constructions
- » Cover seam armholes, cuffs and hem
- » Side seams improve fit

271B

- » Raglan sleeve solution for better movement and adding additional space to the wearer



LAUNDRY CARE

40°C machine wash, tumble dry (low temperature)

262M

4XL only available in Black, French Navy and Light Oxford



271B



MATERIAL / WEIGHT

80% Combed Ringspun Cotton, 20% Polyester;
Outer fabric: 100% Cotton (3 layer fabric)
280g/m²

PACKING

262M: Pack 6/Carton 36
271B: Pack 3/Carton 24

The perfect combination for casual looks whether for work, leisure or sport. Our exceptional melange colours are made of individually dyed, twisted cotton yarns. This gives us an incomparably high quality, natural melange look with 100% cotton surface.

- » Straighter cut for a modern look
- » Modern feminine tailored fit (261F)
- » Outer 100% cotton layer provides the best surface for decoration
- » Half moon neck insert for individualisation
- » Label free: Small size label in the neck (incl. product number)
- » Herringbone neck tape for comfort and stability
- » Fashionable offset shoulder seams
- » Side seams improve fit
- » Elastane on ribbed cuffs and waistband trim to retain shape and smart appearance
- » Cover seam armholes, cuffs and hem
- » Flat, chunky drawcords
- » Double layer hood with cover seam drawcord channel
- » Headphones access
- » Inserted kangaroo pocket to easily print over seams

AUTHENTIC MELANGE HOODED SWEAT

261



261M
Men's Authentic Melange
Hooded Sweat
SIZES XS-3XL



261F
Ladies' Authentic Melange
Hooded Sweat
SIZES XS-XL



LAUNDRY CARE
40°C machine wash, tumble dry (low temperature)



MATERIAL / WEIGHT

75% Combed Ringspun Cotton, 21% Polyester, 4% Viscose;
Carbon Melange: 77% Cotton, 23 % Polyester;
Outer fabric 100% Cotton (3 layer fabric)
280g/m²

PACKING

Pack 3/ Carton 24

AUTHENTIC HOODED SWEAT

265



265M
Men's Authentic Hooded Sweat
SIZES XS-4XL



265F
Ladies' Authentic Hooded Sweat
SIZES XS-XL



265B
Children's Authentic Hooded Sweat
SIZES 3-14 Years

Our premium Authentic Hooded Sweat with its contemporary fit and modern design revives the original spirit of the Sweatshirt.

- » Straighter cut for a modern look
- » Modern feminine tailored fit (265F)
- » Outer 100% cotton layer provides the best surface for decoration
- » Herringbone neck tape for comfort and stability
- » Slimmer shoulders and leaner arms
- » Wider hem and cuff constructions
- » Cover seam armholes, cuffs and hem
- » Flat, chunky drawcords
- » Double layer hood with cover seam drawcord channel
- » Headphones access
- » Kangaroo pockets

265B

- » No drawcords



LAUNDRY CARE

40°C machine wash, tumble dry (low temperature)

265M, 265F

265M 4XL only available in Black, French Navy and Light Oxford



265B



MATERIAL / WEIGHT

80% Combed Ringspun Cotton, 20% Polyester;
Outer fabric: 100% Cotton (3 layer fabric)
280g/m²

PACKING

Pack 3/ Carton 24

.....

Making clothing fun - fashionable, high quality, uncomplicated! You'll soon find that the Authentic Zipped Hood Melange Sweat is an integral part of your casual wear and is the right choice if you are looking for modern, casual work wear.

- » Straighter cut for a modern look
- » Modern feminine tailored fit (263F)
- » Outer 100% cotton layer provides the best surface for decoration
- » Half moon neck insert for individualisation
- » Herringbone neck tape for comfort and stability
- » Label free: Small size label in the neck (incl. product number)
- » Inserted kangaroo pocket to easily print over seams
- » Cover seam armholes, cuffs and hem
- » Elastane on ribbed cuffs and waistband trim to retain shape and smart appearance
- » Flat, chunky drawcords
- » Double layer hood with cover seam drawcord channel
- » Headphones access
- » YKK Metal (Antique Silver) Full Zipper
- » Kissing (covered) zip for full cross body decoration

AUTHENTIC MELANGE ZIPPED HOOD SWEAT

263



263M

Men's Authentic Melange
Zipped Hood Sweat
SIZES XS-3XL



263F

Ladies' Authentic Melange
Zipped Hood Sweat
SIZES XS-XL



LAUNDRY CARE

40°C machine wash, tumble dry (low temperature)



MATERIAL / WEIGHT

75% Combed Ringspun Cotton, 21% Polyester, 4% Viscose;
Carbon Melange: 77% Cotton, 23 % Polyester;
Outer fabric 100% Cotton (3 layer fabric)
280g/m²

PACKING

Pack 3/Carton 24

AUTHENTIC ZIPPED HOOD JACKET

266



266M
Men's Authentic Zipped
Hood Jacket
SIZES XS-4XL



266F
Ladies' Authentic Zipped
Hood Jacket
SIZES XS-XL



266B
Children's Authentic Zipped
Hood Jacket
SIZES 3-14 Years

Our premium Authentic Zipped Hood with its contemporary fit and modern design revives the original spirit of the Sweatshirt.

- » Straighter cut for a modern look
- » Modern feminine tailored fit (266F)
- » Outer 100% cotton layer provides the best surface for decoration
- » Herringbone neck tape for comfort and stability
- » Slimmer shoulders and leaner arms
- » Wider hem and cuff constructions
- » Cover seam armholes, cuffs and hem
- » Flat, chunky drawcords
- » Double layer hood with cover seam drawcord channel
- » Headphone access
- » Side seam pockets
- » YKK Metal (Antique Silver) Full Zipper
- » Kissing (covered) zip for full cross body decoration

266B

- » No drawcords



LAUNDRY CARE

40°C machine wash, tumble dry (low temperature)

266M, 266F

266M 4XL only available in Black, French Navy and Light Oxford



266B



MATERIAL / WEIGHT

80% Combed Ringspun Cotton, 20% Polyester;
Outer fabric: 100% Cotton (3 layer fabric)
280g/m²

PACKING

Pack 3/Carton 24

Inspired by baseball: The contrasting raglan sleeves, collar, cuffs and V-insert on the collar create a trendy retro look. The proven, high-quality 3-layer construction provides comfort and stability as well as best printing results. In addition to the contrasting raglan sleeves, our Authentic Hooded Baseball Sweat has a colour-contrasting, double-worked hood that makes it even more casual.

- » Straighter cut for a modern look
- » Contrasting raglan sleeves for a fashionable look
- » Outer 100% cotton layer provides the best surface for decoration
- » Half moon neck insert for individualization
- » Label free: Small size label in the neck (incl. product number)
- » Herringbone neck tape for comfort and stability
- » Elastane on ribbed cuffs and waistband trim to retain shape and smart appearance
- » Cover seam armholes, cuffs and hem

264M

- » Fashionable V-insert with decorative seam at collar

269M

- » Double layer hood with cover seam drawcord channel
- » Flat, chunky drawcords

AUTHENTIC BASEBALL AND HOODED BASEBALL SWEAT

264 · 269



264M

Authentic Baseball
Sweat
SIZES XS-3XL



269M

Authentic Hooded
Baseball Sweat
SIZES XS-3XL



LAUNDRY CARE

40°C machine wash, tumble dry (low temperature)



MATERIAL / WEIGHT

75% Combed Ringspun Cotton, 21% Polyester, 4% Viscose;
Black, Carbon Melange: 77% Cotton, 23 % Polyester;
Outer fabric 100% Cotton (3 layer fabric)
280g/m²

PACKING

Pack 3/ Carton 24

AUTHENTIC SWEAT JACKET

267



267M
Men's Authentic Sweat Jacket
SIZES XS-4XL



267F
Ladies' Authentic Sweat Jacket
SIZES XS-XL

Our premium Authentic Sweat Jacket with its contemporary fit and modern design revives the original spirit of the Sweatshirt.

- » Straighter cut for a modern look
- » Modern feminine tailored fit (267F)
- » Outer 100% cotton layer provides the best surface for decoration
- » Herringbone neck tape for comfort and stability
- » Slimmer shoulders and leaner arms
- » Wider hem and cuff constructions
- » Cover seam armholes, cuffs and hem
- » Welt pocket workmanship for a smooth and soft pocket entry
- » Self-fabric cadet collar
- » YKK Metal (Antique Silver) Full Zipper
- » Side seam pockets



LAUNDRY CARE

40°C machine wash, tumble dry (low temperature)

267M

4XL only available in Black, French Navy and Light Oxford



267F



MATERIAL / WEIGHT

80% Combed Ringspun Cotton, 20% Polyester;
Outer fabric: 100% Cotton (3 layer fabric)
280g/m²

PACKING

Pack 3/ Carton 24

Our premium Authentic 1/4 Zip Sweat with its contemporary fit and modern design is the perfect addition to our existing high-quality Authentic range.

- » Outer 100% cotton layer provides the best surface for decoration
- » Herringbone neck tape for comfort and stability
- » Slimmer shoulders and leaner arms with front facing shoulder seams
- » Wider hem and cuff constructions
- » Cover seam armholes, cuffs and hem
- » Side seams improve fit
- » Brushed fleece
- » Kissing (covered) zip for full cross body decoration
- » Self-fabric cadet collar
- » YKK Metal (Antique Silver) 1/4 zip

AUTHENTIC QUARTER ZIP

270



270M
Authentic Quarter Zip Sweat
SIZES XS-4XL



LAUNDRY CARE

40°C machine wash, tumble dry (low temperature)



MATERIAL / WEIGHT

80% Combed Ringspun Cotton, 20% Polyester
Outer fabric 100% Cotton (3 layer fabric)
280g/m²

PACKING

Pack 3/Carton 24

AUTHENTIC JOG PANTS

268



268M
Men's Authentic
Jog Pants
SIZES S-2XL



268F
Ladies' Authentic
Jog Pants
SIZES XS-XL

Our premium Authentic Jog Pants completes your leisure look with its contemporary fit and modern design.

- » Contemporary fit and modern design
- » Outer 100% cotton layer provides the best surface for decoration
- » Self-fabric welt pockets with concealed zip fastening
- » Back patch pocket
- » Flat, chunky drawcords
- » Rib at cuff and waistband



LAUNDRY CARE

40°C machine wash, tumble dry (low temperature)



MATERIAL / WEIGHT

80% Combed Ringspun Cotton, 20% Polyester;
Outer fabric: 100% Cotton (3 layer fabric)
280g/m²

PACKING

Pack 3/ Carton 24



282M



LABEL FREE
Removable, adhesive

65% POLYESTER
35% COMBED RINGSPUN COTTON

284M/F
HD Zipped Hood
page 116





HD HOODED SWEAT

281



281M
Men's HD
Hooded Sweat
SIZES XS-3XL



281F
Ladies' HD
Hooded Sweat
SIZES XS-2XL

Our HD Hooded Sweat is a must have for your wardrobe providing you with a contemporary slim fit in a lighter fabric than traditional sweats.

- » Contemporary slim fit
- » Contrast neck tape with stitch detail
- » Cover seam waistband and cuffs
- » Removable, adhesive neck label
- » Jersey lined hood with cover seam drawcord channel
- » Dyed to match flat drawcord with gun metal tipped ends
- » Kangaroo pockets
- » French Terry (no fluff, unbrushed)



LAUNDRY CARE
40°C machine wash



MATERIAL / WEIGHT
65% Polyester, 35% Combed Ringspun Cotton
White: 250g/m², Colours: 255g/m²

PACKING
Pack 3/ Carton 24

Our HD Hooded Sweat is a must have for your wardrobe providing you with a contemporary slim fit in a lighter fabric than traditional sweats.

- » Contemporary slim fit
- » Contrast neck tape with stitch detail
- » Cover seam waistband and cuffs
- » Removable, adhesive neck label
- » Jersey lined hood with cover seam drawcord channel
- » Dyed to match flat drawcord with gun metal tipped ends
- » Kangaroo pockets
- » French Terry (no fluff, unbrushed)

HD ZIPPED HOOD SWEAT

284



284M
Men's HD
Zipped Hood
SIZES XS-3XL



284F
Ladies' HD
Zipped Hood
SIZES XS-2XL



LAUNDRY CARE
40°C machine wash



MATERIAL / WEIGHT

65% Polyester, 35% Combed Ringspun Cotton
White: 250g/m², Colours: 255g/m²

PACKING

Pack 3/ Carton 24

HD QUARTER ZIP SWEAT

282



282M
Men's HD Quarter Zip Sweat
SIZES XS-3XL

Our HD Quarter Zip Sweat is a must have for your wardrobe providing you with a contemporary slim fit in a lighter fabric than traditional sweats.

- » Contemporary slim fit
- » Contrast neck tape with stitch detail
- » Cover seam waistband and cuffs
- » Removable, adhesive neck label
- » Self-fabric cadet collar
- » Covered dyed to match plastic ¼ zip with puller tab
- » French Terry (no fluff, unbrushed)



LAUNDRY CARE
40°C machine wash



MATERIAL / WEIGHT
65% Polyester, 35% Combed Ringspun Cotton
White: 250g/m², Colours: 255g/m²

PACKING
Pack 3/ Carton 24

ESSENTIALS



762M
Classic Sweatshirt
page 120



273B

**50% COMBED RINGSPUN
COTTON
50% POLYESTER**

Our iconic, classic sweatshirt, tried and tested is one of the leading garments in its class.

- » SpotShield™ stain resistant coating
- » Tubular body construction for added stability
- » Herringbone neck tape for comfort
- » Raglan sleeve
- » 1x1 rib trim with elastane on hem and cuffs
- » Name label (762B)

CLASSIC SWEATSHIRT

762



762M
Classic Sweatshirt
SIZES XS-4XL



SPOTSIELD™



LAUNDRY CARE

40°C machine wash, tumble dry

762M

3XL & 4XL only available in Bright Royal, Bottle Green and French Navy



762B



762B
Children's Classic Sweatshirt
SIZES 1-12 Years

MATERIAL / WEIGHT

50% Combed Ringspun Cotton, 50% Polyester
295g/m²

PACKING

Pack 6/Carton 36

V-NECK SWEATSHIRT & CARDIGAN

272·273



272M
V-Neck Sweatshirt
SIZES XS-2XL



272B
Children's V-Neck Sweatshirt
SIZES 3-12 Years



273M
Sweatshirt Cardigan
SIZES XS-XL



273B
Children's Sweatshirt Cardigan
SIZES 3-12 Years

The V-Neck Sweat and Cardigan combine smartness with style and comfort. Ideal to wear with polo shirt, open neck shirt or shirt & tie.

272M, 272B

- » Ringspun cotton for softer hand feel
- » Outstanding performance – wash after wash
- » Set-in sleeves and side seams
- » Name label (272B)

273M, 273B

- » Ringspun cotton for softer hand feel
- » Outstanding performance – wash after wash
- » Set-in sleeves and side seams
- » Side seam pockets
- » Name label (273B)



LAUNDRY CARE

40°C machine wash, tumble dry (low temperature)

272M, 272B, 273M

272M/272B: only available in Black, Bottle Green, Bright Royal and French Navy



273B



MATERIAL / WEIGHT

50% Combed Ringspun Cotton, 50% Polyester
295g/m²

PACKING

272M/272B: Pack 3/ Carton 36
273M/273B: Pack 3/ Carton 24

HOODED SWEATSHIRT

575

The 575 is a real classic. Featuring a straighter cut for a more contemporary fit and offering a wide range of colours and sizes, it is a firm favourite for all wearers.

- » Straighter cut for a modern look
- » Herringbone neck tape for comfort and stability
- » Double layer hood with cover seam drawcord channel
- » Slimmer shoulders and leaner arms
- » Flat, chunky drawcords
- » No drawcord in line with health and safety legislation (575B)
- » Kangaroo pocket with bartacks



575M

Hooded Sweatshirt

SIZES XS-2XL



LAUNDRY CARE

40°C machine wash, tumble dry (low temperature)

575M



575B



575B

Children's Hooded Sweatshirt

SIZES 3-12 Years

MATERIAL / WEIGHT

50% Combed Ringspun Cotton, 50% Polyester
295g/m²

PACKING

Pack 6/ Carton 24

SWEAT PANTS

750



750B

Children's Sweat Pants

SIZES 3-12 Years

Our easy care children's sweat pants are a timeless classic.

- » Elasticated waistband and leg ends
- » Side pockets
- » No drawcord in line with health and safety legislation (750B)



LAUNDRY CARE

40°C machine wash, tumble dry (low temperature)



MATERIAL / WEIGHT

50% Combed Ringspun Cotton, 50% Polyester
295g/m²

PACKING

Pack 6/ Carton 36



FLEECE



.....

Ideal for indoors and outdoors. Our microfleece keeps you warm and comfortable whilst you're busy and active.

- » Cadet collar with zip protector
- » Locker patch for personalisation
- » Side vents and side darts for a better fit and flexibility
- » Light weight high density fabric for a warm comfort

880M, 883M

- » Zipped side pockets

MICROFLEECE

880 · 881 · 883



880M
Men's Full Zip Microfleece
SIZES XS-2XL



881M
Men's Quarter Zip Microfleece
SIZES S-2XL



883F
Ladies' Fitted Full Zip Microfleece
SIZES XS-XL



LAUNDRY CARE
40°C machine wash, tumble dry

.....

880M, 883F



881M



.....

MATERIAL / WEIGHT

100% Polyester Anti-Pill Microfleece
190g/m²

PACKING

Pack 3/ Carton 24

FULL ZIP OUTDOOR FLEECE

870



870M

Men's Full Zip Outdoor Fleece

SIZES XS-4XL



870F

Ladies' Full Zip Outdoor Fleece

SIZES XS-2XL



870B

Children's Full Zip Outdoor Fleece

SIZES 3-12 Years

They're comfortable, cosy and give you protection against the wind and the chill. Our modern fleece fabrics are much more compact than traditional materials, but they still provide all the protection you need against wind and chill. And they give a much smoother surface - so they're ideal for decoration. Even an exceptionally comfortable, cosy outdoor fleece can be sleek and smart. Our panelled construction gives a slimmer, sleeker look that's a subtle reminder of the fleece's sportswear heritage.

- » Cadet collar
- » Side pockets with inside-out zips and inner mesh lining
- » Cord pulls on all zips
- » Side panel construction for modern fit
- » Bungee cord in hem
- » No drawcord in line with health and safety legislation (870B)

BESTSELLER

Compact fabric with smooth surface



LAUNDRY CARE

40°C machine wash, tumble dry



MATERIAL / WEIGHT

100% Polyester Anti-Pill Fleece
320g/m²

PACKING

Pack 3/ Carton 24

Our outdoor fleece gilet is probably the best looking fleece ever made for ladies and men.

- » Cadet collar
- » Side pockets with inside-out zips and inner mesh lining
- » Cord pulls on all zips
- » Side panel construct for modern fit
- » Bungee cord in hem

OUTDOOR FLEECE GILET

872



872M

Men's Outdoor Fleece Gilet

SIZES XS-2XL



872F

Ladies' Outdoor Fleece Gilet

SIZES XS-2XL



LAUNDRY CARE

40°C machine wash, tumble dry

36

CG

FN

BH

38

41

CR

MATERIAL / WEIGHT

100% Polyester Anti-Pill Fleece
320g/m²

PACKING

Pack 3/Carton 24

QUARTER ZIP OUTDOOR FLEECE

874



874M
Quarter Zip Outdoor Fleece
SIZES XS-2XL

Our modern fleece fabrics are much more compact than traditional materials, but they still provide all the protection you need against wind and chill.

- » Cadet collar
- » Side pockets with inside-out zips and inner mesh lining
- » Cord pulls on all zips
- » Side panel construction for modern fit
- » Bungee cord in hem (874M)



LAUNDRY CARE
40°C machine wash, tumble dry



MATERIAL / WEIGHT
100% Polyester Anti-Pill Fleece
320g/m²

PACKING
Pack 3/ Carton 24



JACKETS





OUR JACKET RANGE

INSULATED



CROSS JACKET
430M/F



HODDED NANO JACKET
440M/F



NANO BODYWARMER
441M/F

SOFTSHELL



SOFTSHELL JACKET
140M/F



SOFTSHELL GILET
141M/F



SMARTSHELL JACKET
040M/F



SMARTSHELL GILET
041M/F



BIONIC SOFTSHELL JACKET
410M/F



SPORTSHELL JACKET
520M/F

HARDSHELL



HYDRAPLUS 2000 JACKET
510M/F

CHILDREN'S REVERSIBLE



CHILDREN'S REVERSIBLE
JACKET
875B

WHY RUSSELL JACKETS?

Russell was one of the first brands in the imprint industry to produce softshell jackets.

After our bestselling 140 model, we developed the 410 Bionic Softshell, which immediately caught the eye of our customers thanks to its modern design, outstanding quality and environmentally friendly technology.

We also have the right jackets for you in cold weather.

The new Insulated Jackets boast a modern design and environmentally friendly features, such as the sustainable Dupont™ Sorona® padding, which consists of 37% plant-based raw materials.



ADVANTAGES FOR COMPANIES & TEAMS



Various materials, fabric types and weights



Fitted or classic fit, workwear cut, with a feminine cut for women, modern fit for children



Three- and two-layered softshells, hardshell models, insulated jackets



High-quality components: Dupont™ Sorona® filling, Bionic-Finish® Eco, Aquapel™ by Nanotex®, Teflon®



Sizes from children's 3-4 years, adults from XS to 4XL



Easy care, suitable for tumble drying, dirt repellent

YOUR ADVANTAGES

ADVANTAGES FOR DECORATORS



Easy access for adding embroidery



Clever design for optimal finishing potential, e.g. breast pocket on the right and logo on the left

440F
Ladies' Hooded
Nano Jacket
page 140





INSULATED JACKETS

430F



441M/F





CROSS JACKET

430



430M
Men's Cross Jacket
SIZES S-4XL



430F
Ladies' Cross Jacket
SIZES XS-3XL

With unique features, Russell's Cross Jacket is reliable and trustworthy. This thermal insulating jacket is your perfect companion as the seasons and weather change.

An ultra-modern and environmentally friendly insulation by Dupont™ Sorona® and a water-repellent outer layer made from PFC-free Aquapel™ by Nanotex® make the Cross Jacket the perfect team jacket.

- » Contemporary shaped fit
- » High performance DWR fabric treated with Aquapel™ by Nanotex®
- » Fluorine and PFC free
- » Eco-efficient padding by Dupont™ Sorona®
- » Stand up collar with 2 snap fastener and inner storm flap to ward off wind and draught
- » Reversed zips at centre front, chest pocket, side pockets and sleeves
- » Zipped inside pocket
- » Decorative sleeve flap with snap fastener
- » Discreet decoration access at inner left chest



AQUAPEL™ BY NANOTEX®



DUPONT™ SORONA®



BREATHABLE

Breathable up to 2000g/m² per 24 hours



WINDPROOF



LAUNDRY CARE

30°C machine wash, tumble dry (low temperature), no softeners, no dry clean, do not iron



MATERIAL / WEIGHT

100% Polyester
125g/m²

PACKING

Pack 1/ Carton 12

Being part of a team is not just a job. It's a lifestyle! The right outfit inspires this commitment.

The Nano Bodywarmer and Hooded Nano Jacket by Russell are the perfect team jackets. You can incorporate your team colours in this design. Day and night regardless of the weather! The Nano jackets and bodywarmer are ideal for colder conditions and provide ultra-modern and environmentally friendly thermal insulation by Dupont™ Sorona®. The PFC-free finish Aquapel™ by Nanotex® ensures that rain and moisture rolls off in a completely natural way.

- » High performance DWR fabric treated with Aquapel™ by Nanotex®
- » Fluorine and PFC free
- » Eco-efficient padding by Dupont™ Sorona®
- » Stand up collar with chin guard and inner storm flap to ward off wind and draught
- » Contrasting zips, lining and accents for a refined look
- » 2 side pockets and 1 zipped inside pocket
- » Discreet decoration access at inner left chest

440F/ 440M

- » Stretch binding at sleeves and hem
- » Adjustable 3-parted removable hood

441F /441M

- » Adjustable hem with bungee cord



Aquapel™ BY NANOTEX®

DUPONT™ SORONA®

BREATHABLE
Breathable up to 2000g/m² per 24 hours

WINDPROOF

LAUNDRY CARE
30°C machine wash, tumble dry (low temperature), no softeners, no dry clean, do not iron



MATERIAL / WEIGHT

100% Polyester
66g/m²

PACKING
Pack 1/ Carton 12

HOODED NANO JACKET & BODYWARMER

440 · 441



440M
Men's Hooded Nano Jacket
SIZES S-4XL



440F
Ladies' Hooded Nano Jacket
SIZES XS-3XL



441M
Men's Nano Bodywarmer
SIZES S-4XL



441F
Ladies' Nano Bodywarmer
SIZES XS-3XL



SOFT

S
H
E
L
L



520F





410M
Men's Bionic
Softshell Jacket
page 145



BIONIC SOFTSHELL JACKET

410



410M
Men's Bionic Softshell Jacket
SIZES XS-4XL



410F
Ladies' Bionic Softshell Jacket
SIZES XS-4XL

Our innovative Bionic Softshell Jacket is engineered to provide elemental protection with an environmentally friendly, efficient and sustainable base. The material combines an ecological and pioneering technology. It can be worn over a base layer or as part of a layering system. Perfect for a smart corporate image for those who are searching for a piece of modern outerwear to top off their corporate look.

- » High performance DWR fabric with hydrophobic membrane
- » Treated with Bionic-Finish® Eco
- » Fluorine and PFC free
- » Contemporary shaped fit
- » Contrasting zips and accents for a refined look
- » High moisture vapour transfer with hydroshell air panels at armpits for enhanced movement and breathability
- » Covered zipped pockets: one at chest and one at sleeve
- » Protecting chin guard
- » Stand up collar and inner storm flap to ward off wind and draught
- » Adjustable sleeve hems with injected cuff tabs
- » Inside front honeycomb jersey lining and generous mesh media pocket
- » Seamless shoulder parts for higher comfort and maximum space for decoration



BIONIC-FINISH® ECO



BREATHABLE

Breathable up to 5000g/m² per 24 hours



WINDPROOF



WATERPROOF

Waterproof material up to 5000mm



LAUNDRY CARE

40°C machine wash, tumble dry, no softeners, no dry clean



MATERIAL / WEIGHT

94% Polyester, 6% Elastane treated with Bionic-Finish® Eco (3 layer softshell jacket)
320g/m²

PACKING

Pack 1/ Carton 12



BESTSELLER
Three layers for
protection & warmth

SOFTSHELL JACKET & GILET

140 · 141



140M

Men's Softshell Jacket
SIZES XS-4XL



140F

Ladies' Softshell Jacket
SIZES XS-4XL



141M

Men's Softshell Gilet
SIZES XS-2XL



141F

Ladies' Softshell Gilet
SIZES XS-2XL

Our outdoor Softshell jackets are built in three layers. The outer layer is a smooth, woven Softshell fabric that gives protection from the elements and is great for decoration. Next to the skin there's a cosy microfleece layer for comfort and warmth. In between is the internal layer where the real high-tech stuff happens. It's a membrane that lets moisture out but no rain in, for protection and comfort.

- » Three layers softshell material
- » Side pockets and chest pocket with inner lining, inside-out zippers and cord pulls
- » Full zip with inner storm flap and zip neck protector at collar
- » Drop tail
- » Bungee cord in hem
- » Adjustable cuffs

140F, 141F

- » Feminine Fit



BREATHABLE



WINDPROOF



WATERPROOF

Waterproof material up to 5000mm



LAUNDRY CARE

40°C machine wash, tumble dry (low temperature), no softeners

140M, 140F

3XL & 4XL only available in Black, Classic Red, French Navy, Titanium, Bottle Green



141M, 141F



MATERIAL / WEIGHT

92% Polyester, 8% Elastane (3 layer Softshell fabric)
340g/m²

PACKING

Pack 1/ Carton 12

Russell's Smart Softshells are smart looking, bonded 2-layer Softshells - Softshells without a membrane, providing a higher degree of breathability.

- » Durable Water Repellent Du Pont™ Teflon® Coating
- » Two layer softshell material without membrane
- » 2 zipped pockets
- » Inside-out zippers
- » Cadet collar
- » Drop tail
- » Protection against wind and chill
- » Higher degree of breathability
- » Microfleece lining
- » Back neck tape
- » Bound inside seams on zip
- » Headphone access

SMART SOFTSHELL JACKET & GILET

040 · 041



040M
Men's Smart Softshell Jacket
SIZES XS-3XL



040F
Ladies' Smart Softshell Jacket
SIZES XS-3XL



TEFLON®

Teflon® is a registered trademark of Du Pont used under license by INVISTA and its affiliates.



BREATHABLE



WINDPROOF



LAUNDRY CARE

40°C machine wash, tumble dry (low temperature), no softeners



041M
Men's Smart Softshell Gilet
SIZES XS-3XL



041F
Ladies' Smart Softshell Gilet
SIZES XS-3XL



MATERIAL / WEIGHT

100% Polyester Knitted Softshell Outer Layer, Bonded Microfleece Inner Layer
315g/m²

PACKING

Pack 1/ Carton 12

SPORTSHELL 5000 JACKET

520



520M

Men's Sportshell
5000 Jacket
SIZES XS-2XL



520F

Ladies' Sportshell
5000 Jacket
SIZES XS-2XL

Engineered for high activity. Maximum thermoregulation and excellent moisture transfer make this Softshell jacket perfect for active wearer requirements.

- » Three layers softshell material
- » Designed for active living: laser cut pockets with matt waterproof zips on sleeve and chest; internal headphone pocket
- » Microfleece inner collar for superior comfort
- » Adjustable cuffs for comfort and maintenance of personal microclimate; YKK centre zipper
- » Water resistance to 5000mm and breathability of 5000g/m² per 24 hours (bonded hydrophobic membrane), durable water repellent finish
- » Ergonomic shape - body fit creates microclimate for maximum thermoregulation and moisture transfer
- » Ventilation over the armpit area
- » Discreet decoration access at inner left chest



BREATHABLE

Breathable up to 5000g/m² per 24 hours



WINDPROOF



WATERPROOF

Waterproof material up to 5000mm



LAUNDRY CARE

30°C machine wash (gentle cycle),
tumble dry (low temperature), no softeners



MATERIAL / WEIGHT

100% polyester outer, 100% polyester mesh,
Advanced Softshell Fabric with Natural Stretch
(3 layer bonded hydrophobic substrate)
250g/m²

PACKING

Pack 1/ Carton 12

875B



510F



510M
Men's Hydraplus
2000 Jacket
Page 152

HARD SHELL

Our 510 jacket perfectly combines everything required from a modern outdoor jacket with a contemporary look at an entry level price.

- » Active fit with articulated elbows and raglan sleeves
- » Zipped hand warmer pockets with internal pocket for phone, headphone access and zipped chest pocket (inside-out zips with cord pulls)
- » Inside-out YKK front zipper with cord pull; double storm flap with additional hook and loop fastener closure
- » Stowaway 3 piece hood and microfleece inner collar
- » Fully lined, with discreet concealed decoration access at hem, bungee cord in hem

HYDRAPLUS 2000 JACKET

510



510M

Men's Hydraplus
2000 Jacket
SIZES XS-4XL



BREATHABLE

Breathable up to 2000g/m² per 24 hours



WINDPROOF



WATERPROOF

Waterproof material up to 2000mm



LAUNDRY CARE

30°C machine wash (gentle cycle),
tumble dry (low temperature), no softeners

510M, 510F

3XL & 4XL only available in Black, Classic Red,
French Navy and Titanium

36

TT

FN

ZU

CR

MATERIAL / WEIGHT

100% Nylon Taslan
190g/m²

PACKING

Pack 1/ Carton 12



510F

Ladies' Hydraplus
2000 Jacket
SIZES XS-4XL

CHILDREN'S REVERSIBLE JACKET

875



875B

Children's Reversible
Jacket

SIZES 3-12 Years

Our reversible children's jacket is showerproof, warm and functional.

- » Reflective tape on front and back
- » 2 pockets on each side
- » Storm flap over front zip
- » Cadet collar with concealed hood
- » Elasticated cuffs
- » Hanging loop and name label
- » Discreet zipped decoration access at hem



LAUNDRY CARE

40°C machine wash



MATERIAL / WEIGHT

100% Woven Polyester on one side,
100% Polyester Anti-Pill Fleece on Reverse
370g/m²

PACKING

Pack 3/ Carton 24



WORKWEAR



010M

This premium T-shirt has been specifically designed for the workplace and combines extra reinforcements and exceptional durability with comfort.

- » Classic Fit
- » Single Jersey
- » Double layered shoulder panels and reinforced twin needle stitching at armhole
- » 1x1 rib knit collar with top stitch
- » Double layer yoke, perfect for decoration
- » Enzyme washed ringspun cotton for a softer feel and added comfort

011M

Our hard wearing 100% cotton polo, specifically designed for the workplace combines exceptional durability and comfort.

- » Classic Fit
- » Flat knit collar and cuffs with single ripple effect
- » Collar stand for superior comfort and stability
- » Locker patch for personalisation
- » Double layered shoulder panels and reinforced twin needle stitching at armhole
- » Plastic-coated metal buttons
- » Twin needle hem at bottom for added stability

HEAVY DUTY WORKWEAR T & POLO

010 · 011



010M

Heavy Duty Workwear T

SIZES XS-4XL



011M

Heavy Duty Workwear
Polo

SIZES XS-4XL



LAUNDRY CARE

60°C machine wash, tumble dry



MATERIAL / WEIGHT

100% Combed Ringspun Cotton
Light Oxford: 93% Cotton, 7% Viscose
010: 180g/m², 011: 215g/m²

PACKING

Pack 3/Carton 36

HEAVY DUTY COLLAR & CREW NECK WORKWEAR SWEATSHIRTS

012 · 013



012M
Heavy Duty Workwear
Collar Sweatshirt
SIZES XS-4XL



013M
Heavy Duty Workwear
Sweatshirt
SIZES XS-4XL

A true workwear sweatshirt that combines hard wearing material with a host of design features that caters to the needs of the more physically demanding workplace.

- » SpotShield™ stain resistant coating
- » Double layered shoulder panels for superior comfort and stability
- » Locker patch for personalisation
- » Elasticated pen holder on top sleeve
- » 1x1 rib trim with elastane on cuffs
- » Drop tail and compact 1x1 ribbed hem for perfect bottom fit and protection against wind and chill Side darts for better fit and flexibility

012M

- » Collar stand for superior comfort and stability
- » Plastic-coated metal buttons

013M

- » Back neck tape for superior comfort and stability



SPOTSHIELD™



LAUNDRY CARE

60°C machine wash, tumble dry



MATERIAL / WEIGHT

80% Combed Ringspun Cotton, 20% Polyester
300g/m²

PACKING

Pack 3/Carton 24

The hardwearing outer material makes this warm, wadded gilet most suitable for heavy duty work environments. Versatile pockets provide storage space for all-important items large and small (including A4 documents - unfolded!).

- » Teflon® fabric protector
- » Zipped vertical front pockets and internal A4 document pocket on right inner side
- » Full zip with stormflap, flexi notch at neck
- » Drop Tail, elasticated gusset at armhole, reinforced hang tag
- » Right hand side chest pocket with functional multi compartments
- » Padded inner linings
- » Spacious, discreet zipped decoration access at left chest

HEAVY DUTY WORKWEAR GILET

014



TEFLON®
Teflon® is a registered trademark of Du Pont used under license by INVISTA and its affiliates.



LAUNDRY CARE
60°C machine wash, tumble dry



MATERIAL / WEIGHT

65% Polyester, 35% Cotton Hardwearing Canvas with 5oz Polyester Wadding, 100% Polyester Inner Lining
260g/m²

PACKING
Pack 1/ Carton 12



014M
Heavy Duty Workwear Gilet
SIZES XS-4XL

The Russell Softshell jacket for the workplace - with fabric, fit and features that are designed for physical stress and demanding work environments.

- » Teflon® water repellent
- » 2 deep, zipped front pockets
- » Sturdy YKK vision front zipper with pull cord, inner storm flap and zip guard at collar
- » Microfleece inner collar for superior comfort
- » Black contrast panels on shoulders, elbows and back of hem
- » Ergonomic fit with articulated elbows
- » One piece shoulder panel, no shoulder seam
- » 1 multi compartment pocket
- » Cuffs with internal stretch insert for weather protection and comfortable fit

HEAVY DUTY WORKWEAR SOFTSHELL JACKET

018



BREATHABLE
Breathable up to 5000g/m² per 24 hours



WINDPROOF



WATERPROOF
Waterproof material up to 5000mm



LAUNDRY CARE
30°C machine wash, tumble dry (low temperature)



MATERIAL / WEIGHT

96% polyester/4%elastane durable outer fabric with abrasion resistant textured finish, breathable, waterproof membrane, bonded microfleece lining (100%polyester with grid texture)
400g/m²

PACKING
Pack 1/ Carton 12



018M
Heavy Duty Workwear Softshell Jacket
SIZES XS-4XL

WORKWEAR POLYCOTTON TWILL TROUSERS & SHORTS

001 · 002

001M

Workwear Polycotton
Twill Trousers

SIZES

WAIST SIZES

UK (inches): 28/30
/32/34/36/38/40/42
/44/46/48
Europe: 44/46/48/50
/52/54/56/58/60/62/64

LEG LENGTH

Ins R32/L:34,
cm R81/L:86



002M

Workwear Polycotton
Twill Shorts

SIZES

WAIST SIZES

UK (inches): 28/30
/32/34/36/38/40/42
/44/46/48
Europe: 44/46/48/50
/52/54/56/58/60/62/64

Contemporary designed workwear trousers with an expandable waist for added comfort, suitable for a wide variety of work environments.

- » 2 back pockets with flaps
- » Cargo pocket on right leg
- » Small extra pocket below waistband
- » Expandable waistband for comfortable fit



LAUNDRY CARE

40°C machine wash, tumble dry

001M



002M



MATERIAL / WEIGHT

65% Polyester, 35% Cotton Twill
245g/m²

PACKING

Pack 1/ Carton 12

HEAVY DUTY WORKWEAR TROUSERS

015

015M

Heavy Duty
Workwear Trousers

SIZES

WAIST SIZES

UK (inches): 28/30
/32/34/36/38/40/42
/44/46/48
Europe: 44/46/48/50
/52/54/56/58/60/62/64

LEG LENGTH

Ins S:30/R32/L:34
cm S:76/R81/L:86



Our hardwearing trousers combine contemporary cut with excellent fit and versatile pockets.

- » Teflon® fabric protector
- » 2 back pockets, one open, one with flap and hook and loop fastener
- » Cargo pockets on both legs, with practical compartments on right leg
- » Small extra pocket below waistband
- » Triple stitched inner leg seams and pocket openings triple, reinforced seat area
- » Internal pockets for knee pads (21cm x 15cm max.)
- » YKK zipper



TEFLON®

Teflon® is a registered trademark of Du Pont used under license by INVISTA and its affiliates.



LAUNDRY CARE

60°C machine wash, tumble dry



MATERIAL / WEIGHT

65% Polyester, 35% Cotton Hardwearing Canvas
260g/m²

PACKING

Pack 1/ Carton 12

OXFORD SHIRT		70% COTTON, 30% POLYESTER OXFORD / WHITE: 130G/M ² , COLOURS: 135G/M ²																		
922M	30	MEN'S LONG SLEEVE TAILORED OXFORD SHIRT	S-4XL	1/12	•															
923M	30	MEN'S SHORT SLEEVE TAILORED OXFORD SHIRT	S-4XL	1/12	•															
928M	30	MEN'S LONG SLEEVE TAILORED BUTTON-DOWN OXFORD SHIRT	S-4XL	1/12	•															
932M	31	MEN'S LONG SLEEVE CLASSIC OXFORD SHIRT	S-6XL	1/12	•															
932F	31	LADIES' LONG SLEEVE TAILORED OXFORD SHIRT	XS-6XL	1/12	•															
933M	31	MEN'S SHORT SLEEVE CLASSIC OXFORD SHIRT	S-6XL	1/12	•															
933F	31	LADIES' SHORT SLEEVE TAILORED OXFORD SHIRT	XS-6XL	1/12	•															
ULTIMATE NON-IRON SHIRT		100% COTTON MICRO TWILL / 120G/M ²																		
956M	34	MEN'S LONG SLEEVE CLASSIC ULTIMATE NON-IRON SHIRT	S-4XL	1/12	•															
956F	34	LADIES' LONG SLEEVE TAILORED ULTIMATE NON-IRON SHIRT	XS-4XL	1/12	•															
957M	34	MEN'S SHORT SLEEVE CLASSIC ULTIMATE NON-IRON SHIRT	S-4XL	1/12	•															
957F	34	LADIES' SHORT SLEEVE TAILORED ULTIMATE NON-IRON SHIRT	XS-4XL	1/12	•															
958M	35	MEN'S LONG SLEEVE TAILORED ULTIMATE NON-IRON SHIRT	S-4XL	1/12	•															
959M	35	MEN'S SHORT SLEEVE TAILORED ULTIMATE NON-IRON SHIRT	S-4XL	1/12	•															
COOLMAX® SHIRT		70% COTTON, 30% COOLMAX®- POLYESTER MICRO TWILL / WHITE: 110G/M ² , COLOURS: 105G/M ²																		
972M	37	MEN'S LONG SLEEVE TAILORED COOLMAX® SHIRT	S-4XL	1/12	•															
972F	37	LADIES' LONG SLEEVE TAILORED COOLMAX® SHIRT	XS-4XL	1/12	•															
973M	37	MEN'S SHORT SLEEVE TAILORED COOLMAX® SHIRT	S-4XL	1/12	•															
973F	37	LADIES' SHORT SLEEVE TAILORED COOLMAX® SHIRT	XS-4XL	1/12	•															
CLASSIC TWILL SHIRT		100% COTTON TWILL / 130G/M ²																		
916M	38	MEN'S LONG SLEEVE CLASSIC TWILL SHIRT	S-4XL	1/12	•															
916F	38	LADIES' LONG SLEEVE CLASSIC TWILL SHIRT	XS-2XL	1/12	•															
917M	38	MEN'S SHORT SLEEVE CLASSIC TWILL SHIRT	S-4XL	1/12	•															
917F	38	LADIES' SHORT SLEEVE CLASSIC TWILL SHIRT	XS-2XL	1/12	•															
ROLL SLEEVE TWILL SHIRT		100% COTTON TWILL / 130G/M ²																		
918M	39	MEN'S ROLL LONG SLEEVE FITTED TWILL SHIRT	S-4XL	1/12	•															
918F	39	LADIES' ROLL 3/4 SLEEVE FITTED TWILL SHIRT	XS-2XL	1/12	•															
919M	39	MEN'S ROLL SHORT SLEEVE FITTED TWILL SHIRT	S-4XL	1/12	•															
919F	39	LADIES' ROLL SHORT SLEEVE FITTED TWILL SHIRT	XS-2XL	1/12	•															
CONTRAST HERRINGBONE SHIRT		84% COTTON, 16% POLYESTER HERRINGBONE / WHITE: 125G/M ² , COLOURS: 130G/M ²																		
964M	42	MEN'S LONG SLEEVE TAILORED CONTRAST HERRINGBONE SHIRT	S-4XL	1/12																
HERRINGBONE SHIRT		84% COTTON, 16% POLYESTER HERRINGBONE / WHITE: 125G/M ² , COLOURS: 130G/M ²																		
962M	42	MEN'S LONG SLEEVE TAILORED HERRINGBONE SHIRT	S-4XL	1/12	•															
962F	42	LADIES' LONG SLEEVE TAILORED HERRINGBONE SHIRT	XS-4XL	1/12	•															
963M	42	MEN'S SHORT SLEEVE TAILORED HERRINGBONE SHIRT	S-4XL	1/12	•															
963F	42	LADIES' SHORT SLEEVE TAILORED HERRINGBONE SHIRT	XS-4XL	1/12	•															

RUSSELL COLLECTION - KNITWEAR

PRODUCT CODE	PAGE NO.	PRODUCT NAME	SIZES	PACKS / CARTONS	COLORS					
					36	CM	D2	FN	MC	
CREW-NECK KNITTED PULLOVER		50% COTTON, 50% ACRYLIC COTTONBLEND / 275G/M ²								
717M	46	MEN'S CREW NECK KNITTED PULLOVER	XXS-4XL	1/12	•	•	•	•	•	•
717F	46	LADIES' CREW NECK KNITTED PULLOVER	XXS-4XL	1/12	•	•	•	•	•	•
V-NECK KNITTED PULLOVER		50% COTTON, 50% ACRYLIC COTTONBLEND / 275G/M ²								
710M	47	MEN'S V-NECK KNITTED PULLOVER	XXS-4XL	1/12	•	•	•	•	•	•
710F	47	LADIES' V-NECK KNITTED PULLOVER	XXS-4XL	1/12	•	•	•	•	•	•
V-NECK KNITTED CARDIGAN		50% COTTON, 50% ACRYLIC COTTONBLEND / 275G/M ²								
715M	48	MEN'S V-NECK KNITTED CARDIGAN	XXS-4XL	1/12	•	•	•	•	•	•
715F	48	LADIES' V-NECK KNITTED CARDIGAN	XXS-4XL	1/12	•	•	•	•	•	•
V-NECK SLEEVELESS KNITTED PULLOVER		50% COTTON, 50% ACRYLIC COTTONBLEND / 275G/M ²								
716M	49	V-NECK SLEEVELESS KNITTED PULLOVER	XXS-4XL	1/12	•	•	•	•	•	•
V-NECK SLEEVELESS KNITTED CARDIGAN		50% COTTON, 50% ACRYLIC COTTONBLEND / 275G/M ²								
719M	49	MEN'S V-NECK SLEEVELESS KNITTED CARDIGAN	XXS-4XL	1/12	•	•	•	•	•	•

T-SHIRTS

PRODUCT CODE	PAGE NO.	PRODUCT NAME	SIZES	PACKS / CARTONS	COLORS																																				
					30	36	38	41	44	57	60	65	81	AL	AQ	BH	BK	BR	CD	CG	CR	DO	FN	K2	LH	LX	PD	SC	WL	ZU	2P	GY	M3	RM	S7	N9	IM				
PURE ORGANIC T		100% COMBED RINGSPUN COTTON (ORGANIC) / *LIGHT OXFORD 97% COTTON, 3% VISCOSE / 160G/M ² / 118M/F: 190G/M ²																																							
108M	58	MEN'S PURE ORGANIC T	XS-3XL	12/72	•	•	•	•	•	•	•	•	•	•	•	•	•	•	•	•	•	•	•	•	•	•	•	•	•	•	•	•	•	•	•	•	•	•	•		
108F	58	LADIES' PURE ORGANIC T	XS-2XL	12/72	•	•	•	•	•	•	•	•	•	•	•	•	•	•	•	•	•	•	•	•	•	•	•	•	•	•	•	•	•	•	•	•	•	•	•	•	
108B	58	CHILDREN'S PURE ORGANIC T	3-14 YEARS	6/36	•	•	•	•	•	•	•	•	•	•	•	•	•	•	•	•	•	•	•	•	•	•	•	•	•	•	•	•	•	•	•	•	•	•	•	•	
100M	58	PURE ORGANIC LONG SLEEVE T	XS-3XL	6/36	•	•	•	•	•	•	•	•	•	•	•	•	•	•	•	•	•	•	•	•	•	•	•	•	•	•	•	•	•	•	•	•	•	•	•	•	
103M	60	MEN'S PURE ORGANIC V-NECK T	XS-3XL	6/36	•	•	•	•	•	•	•	•	•	•	•	•	•	•	•	•	•	•	•	•	•	•	•	•	•	•	•	•	•	•	•	•	•	•	•	•	
103F	60	LADIES' PURE ORGANIC V-NECK T	XS-2XL	6/36	•	•	•	•	•	•	•	•	•	•	•	•	•	•	•	•	•	•	•	•	•	•	•	•	•	•	•	•	•	•	•	•	•	•	•	•	
118M	61	MEN'S PURE ORGANIC HEAVY T	XS-3XL	6/36	•	•	•	•	•	•	•	•	•	•	•	•	•	•	•	•	•	•	•	•	•	•	•	•	•	•	•	•	•	•	•	•	•	•	•	•	
118F	61	LADIES' PURE ORGANIC HEAVY T	XS-2XL	6/36	•	•	•	•	•	•	•	•	•	•	•	•	•	•	•	•	•	•	•	•	•	•	•	•	•	•	•	•	•	•	•	•	•	•	•	•	
HENLEY HD T		65% POLYESTER, 35% RINGSPUN COMBED COTTON / WHITE: 155G/M ² , COLOURS: 160G/M ²																																							
168M	64	MEN'S HENLEY HD T	XS-3XL	6/36	•	•	•	•	•	•	•	•	•	•	•	•	•	•	•	•	•	•	•	•	•	•	•	•	•	•	•	•	•	•	•	•	•	•	•	•	
HD T		65% POLYESTER, 35% RINGSPUN COMBED COTTON / WHITE: 155G/M ² , COLOURS: 160G/M ²																																							
165M	67	MEN'S HD T	XS-3XL	6/36	•	•	•	•	•	•	•	•	•	•	•	•	•	•	•	•	•	•	•	•	•	•	•	•	•	•	•	•	•	•	•	•	•	•	•	•	
165F	67	LADIES' HD T	XS-2XL	6/36	•	•	•	•	•	•	•	•	•	•	•	•	•	•	•	•	•	•	•	•	•	•	•	•	•	•	•	•	•	•	•	•	•	•	•	•	
165B	67	CHILDREN'S HD T	5-14 YEARS	6/36	•	•	•	•	•	•	•	•	•	•	•	•	•	•	•	•	•	•	•	•	•	•	•	•	•	•	•	•	•	•	•	•	•	•	•	•	
SLIM T		100% RINGSPUN COTTON; LIGHT OXFORD: 93% COTTON, 7% VISCOSE / WHITE: 140G/M ² , COLOURS: 145G/M ²																																							
155M	70	MEN'S SLIM T	S-2XL	10/100	•	•	•	•	•	•	•	•	•	•	•	•	•	•	•	•	•	•	•	•	•	•	•	•	•	•	•	•	•	•	•	•	•	•	•	•	
155F	70	LADIES' SLIM T	XS-XL	10/100	•	•	•	•	•	•	•	•	•	•	•	•	•	•	•	•	•	•	•	•	•	•	•	•	•	•	•	•	•	•	•	•	•	•	•	•	
155B	70	CHILDREN'S SLIM T	1-14 YEARS	10/100	•	•	•	•	•	•	•	•	•	•	•	•	•	•	•	•	•	•	•	•	•	•	•	•	•	•	•	•	•	•	•	•	•	•	•	•	

JACKETS

PRODUCT CODE	PAGE NO.	PRODUCT NAME	SIZES	PACKS / CARTONS	30	36	BOTTLE GREEN	BURGUNDY	BRIGHT ROYAL	STONE	CONVOY GREY	CLASSIC RED	DARK OLIVE	FRENCH NAVY	IRON GREY	TITANIUM	AZURE BLUE	
					WHITE	BLACK	38	41	BK	CG	CR	DO	FN	IR	TT	ZU		
CROSS JACKET		100% POLYESTER / 125G/M ²																
430M	138	MEN'S CROSS JACKET	S-4XL	1/12														
430F	139	LADIES' CROSS JACKET	XS-3XL	1/12														
HOODED NANO JACKET		100% POLYESTER / 66G/M ²																
440M	140	MEN'S HOODED NANO JACKET	S-4XL	1/12														
440F	140	LADIES' HOODED NANO JACKET	XS-3XL	1/12														
NANO BODYWARMER		100% POLYESTER / 66G/M ²																
441M	141	MEN'S NANO BODYWARMER	S-4XL	1/12														
441F	141	LADIES' NANO BODYWARMER	XS-3XL	1/12														
BIONIC SOFTSHELL JACKET		94% POLYESTER, 6% ELASTANE TREATED WITH BIONIC-FINISH [®] ECO (3 LAYER SOFTSHELL JACKET) / 320G/M ²																
410M	144	MEN'S BIONIC SOFTSHELL JACKET	XS-4XL	1/12														
410F	144	LADIES' BIONIC SOFTSHELL JACKET	XS-4XL	1/12														
SOFTSHELL JACKET		92% POLYESTER, 8% ELASTANE (3 LAYER SOFTSHELL FABRIC) / 340G/M ²																
140M	146	MEN'S SOFTSHELL JACKET	XS-4XL	1/12	*													
140F	146	LADIES' SOFTSHELL JACKET	XS-4XL	1/12	*													
SOFTSHELL GILET		92% POLYESTER, 8% ELASTANE (3 LAYER SOFTSHELL FABRIC) / 340G/M ²																
141M	146	MEN'S SOFTSHELL GILET	XS-2XL	1/12														
141F	146	LADIES' SOFTSHELL GILET	XS-2XL	1/12														
SMART SOFTSHELL JACKET		100% POLYESTER KNITTED SOFTSHELL OUTER LAYER, BONDED MICROFLEECE INNER LAYER / 315G/M ²																
040M	148	MEN'S SMART SOFTSHELL JACKET	XS-3XL	1/12														
040F	148	LADIES' SMART SOFTSHELL JACKET	XS-3XL	1/12														
SMART SOFTSHELL GILET		100% POLYESTER KNITTED SOFTSHELL OUTER LAYER, BONDED MICROFLEECE INNER LAYER / 315G/M ²																
041M	148	MEN'S SMART SOFTSHELL GILET	XS-3XL	1/12														
041F	148	LADIES' SMART SOFTSHELL GILET	XS-3XL	1/12														
SPORTSHELL 5000 JACKET		100% POLYESTER OUTER, 100% POLYESTER MESH, ADVANCED SOFTSHELL FABRIC WITH NATURAL STRETCH (3 LAYER BONDED HYDROPHOBIC SUBSTRATE) / 250G/M ²																
520M	149	MEN'S SPORTSHELL 5000 JACKET	XS-2XL	1/12														
520F	149	LADIES' SPORTSHELL 5000 JACKET	XS-2XL	1/12														
HYDRAPLUS 2000 JACKET		100% NYLON TASLAN 190G/M ²																
510M	152	MEN'S HYDRAPLUS 2000 JACKET	XS-4XL	1/12														
510F	152	LADIES' HYDRAPLUS 2000 JACKET	XS-4XL	1/12														
CHILDREN'S REVERSIBLE JACKET		100% WOVEN POLYESTER ON ONE SIDE, 100% POLYESTER ANTI-PILL FLEECE ON REVERSE / 370G/M ²																
875B	153	CHILDREN'S REVERSIBLE JACKET	3-12 YEARS	3/24														

WORKWEAR

PRODUCT CODE	PAGE NO.	PRODUCT NAME	SIZES	PACKS / CARTONS	30	36	38	44	BH	CG	CR	FN	LX
					WHITE	BLACK	BOTTLE GREEN	ORANGE	BRIGHT ROYAL	CONVOY GREY	CLASSIC RED	FRENCH NAVY	LIGHT OXFORD
HEAVY DUTY WORKWEAR T-SHIRT		100% COMBED RINGSPUN COTTON; LIGHT OXFORD: 93% COTTON, 7% VISCOSE / 180G/M ²											
010M	156	HEAVY DUTY WORKWEAR T-SHIRT	XS-4XL	3/36	•								
HEAVY DUTY WORKWEAR POLO		100% COMBED RINGSPUN COTTON; LIGHT OXFORD: 93% COTTON, 7% VISCOSE / 215G/M ²											
011M	156	HEAVY DUTY WORKWEAR POLO	XS-4XL	3/36	•								
HEAVY DUTY COLLAR AND CREW NECK WORKWEAR SWEATSHIRT		80% COMBED RINGSPUN COTTON, 20% POLYESTER / 300G/M ²											
012M	157	HEAVY DUTY WORKWEAR COLLAR SWEATSHIRT	XS-4XL	3/24									
013M	157	HEAVY DUTY WORKWEAR SWEATSHIRT	XS-4XL	3/24									
HEAVY DUTY WORKWEAR GILET		65% POLYESTER, 35% COTTON HARDWEARING CANVAS WITH 5OZ POLYESTER WADDING, 100% POLYESTER INNER LINING / 260G/M ²											
014M	158	HEAVY DUTY WORKWEAR GILET	XS-4XL	1/12									
HEAVY DUTY WORKWEAR SOFTSHELL JACKET		96% POLYESTER, 4%ELASTANE DURABLE OUTER FABRIC WITH ABRASION RESISTANT TEXTURED FINISH, BREATHABLE, WATERPROOF MEMBRANE, BONDED MICROFLEECE LINING (100%POLYESTER WITH GRID TEXTURE) / 400G/M ²											
018M	158	HEAVY DUTY WORKWEAR SOFTSHELL JACKET	XS-4XL	1/12									
WORKWEAR POLYCOTTON TWILL TROUSERS & SHORTS		65% POLYESTER, 35% COTTON TWILL / 245G/M ²											
001M	159	WORKWEAR POLYCOTTON TWILL TROUSERS	SEE GUIDE-LINES	1/12									
002M	159	WORKWEAR POLYCOTTON TWILL SHORTS	SEE GUIDE-LINES	1/12									
HEAVY DUTY WORKWEAR TROUSERS		65% POLYESTER, 35% HARDWEARING CANVAS / 260G/M ²											
015M	159	HEAVY DUTY WORKWEAR TROUSERS	SEE GUIDE-LINES	1/12									

SIZE GUIDE

All of our measurements are based on actual “to fit” body sizes rather than the size of the garment itself. For example, a polo shirt with a chest to fit size of 92-97cm / 36-38” will fit someone with this chest measurement; trousers with a waist to fit 50 Europe / 34”, will fit a person with this measurement.

HERE ARE SOME TIPS TO HELP YOU CHOOSE THE MOST APPROPRIATE GARMENT SIZE(S):

1

CHEST

Men: Measure around the fullest part of the chest, 2.5cm below the underarm.

Women: Measure around the fullest part of the bust.

2

WAIST

All: Measure around the natural waist, keeping the measuring tape taut.

3

COLLAR

Men: Measure around the base of the neck.

4

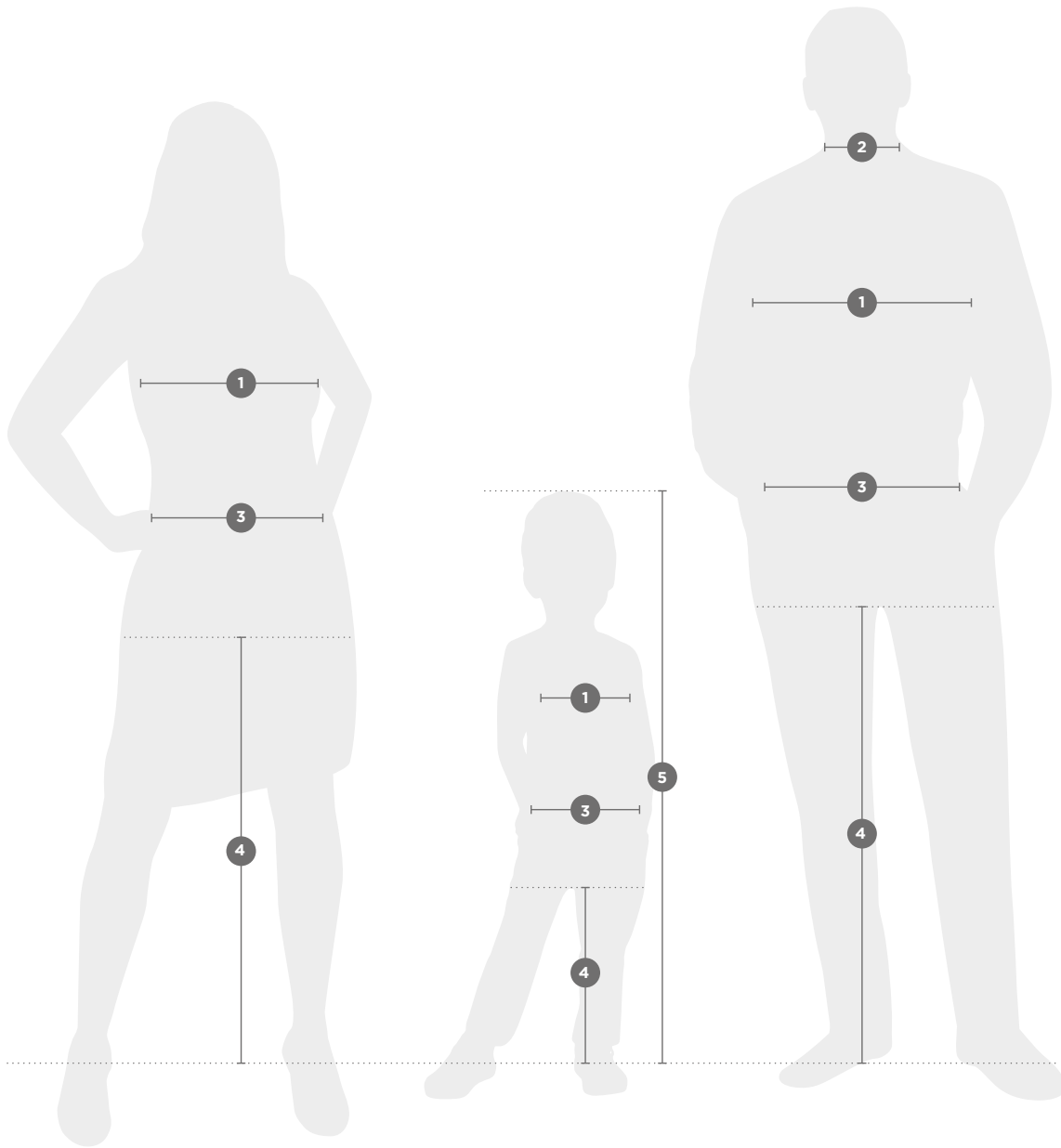
HEIGHT

Children: Standing still with feet together and flat on the floor, measure from the top of the head to the ground.

5

LEG LENGTH

All: Measure from the top of the inside leg at the crotch down to where the trousers are normally worn with shoes.



ALL PRODUCTS (excluding shirts, trousers, shorts & sweatpants)

LADIES'	XXS	XS	S	M	L	XL	2XL	3XL	4XL	5XL	6XL
DRESS SIZE											
UK	6	8	10	12	14	16	18	20	22	24	26
FRANCE	34	36	38	40	42	44	46	48	50	52	54
ITALY	38	40	42	44	46	48	50	52	54	56	58
GERMANY/EUROPE	32	34	36	38	40	42	44	46	48	50	52
CHEST TO FIT (CM)	72-77	77-82	82-87	87-92	92-97	97-102	102-107	107-112	112-117	117-122	122-127
CHEST TO FIT (INS)	28-30	30-32	32-34	34-36	36-38	38-40	40-42	42-44	44-46	46-48	48-50

MEN'S	XXS	XS	S	M	L	XL	2XL	3XL	4XL	5XL	6XL
DRESS SIZE											
GERMANY/EUROPE	44	46	48	50	52	54-56	56-58	58-60	62-64	66-68	70-72
CHEST TO FIT (CM)	82-87	87-92	92-97	97-102	102-107	107-112	112-117	117-122	122-127	127-132	132-137
CHEST TO FIT (INS)	32-34	34-36	36-38	38-40	40-42	42-44	44-46	46-48	48-50	50-52	52-54

SHIRTS

LADIES'	XXS	XS	S	M	L	XL	2XL	3XL	4XL	5XL	6XL
DRESS SIZE											
UK	6	8	10	12	14	16	18	20	22	24	26
FRANCE	34	36	38	40	42	44	46	48	50	52	54
ITALY	38	40	42	44	46	48	50	52	54	56	58
GERMANY/EUROPE	32	34	36	38	40	42	44	46	48	50	52
CHEST TO FIT (CM)	72-77	77-82	82-87	87-92	92-97	97-104	104-112	112-120	120-130	130-137	137-144
CHEST TO FIT (INS)	28-30	30-32	32-34	34-36	36-38	38-41	41-44	44-47	47-51	51-54	54-57

MEN'S	S	M	L	XL	2XL	3XL	4XL	5XL	6XL				
DRESS SIZE													
COLLAR TO FIT (CM)	37-38	39-40	41-42	43-44	45-46	47-48	49-50	51-52	53-54				
DUAL COLLAR SIZES (INS)	14.5/15	15.5	16/16.5	17/17.5	18	18.5/19	19.5	20	21				
INDIVIDUAL COLLAR SIZES (INS)	14.5	15	15.5	16	16.5	17	17.5	18	18.5	19	19.5	20	21
CHEST TO FIT (CM)	92-97	97-102	102-107	107-112	112-117	117-122	122-127	127-132	132-137				
CHEST TO FIT (INS)	36-38	38-40	40-42	42-44	44-46	46-48	48-50	50-52	52-54				

TROUSERS

UK (INS)	28	30	32	34	36	38	40	42	44	46	48
EUROPE	44	46	48	50	52	54	56	58	60	62	64

	SHORT	REGULAR	LONG
LEG LENGTH (CM)	76	81	86
LEG LENGTH (INS)	30	32	34

SWEATPANTS

LADIES'	XS	S	M	L	XL
DRESS SIZE					
UK	8	10	12	14	16
WAIST TO FIT (CM)	63.5	68.5	74	79	84
WAIST TO FIT (INS)	25	27	29	31	33

MEN'S	XS	S	M	L	XL	2XL	3XL
DRESS SIZE							
WAIST TO FIT (CM)	71	76	81	86.5	91.5	96.5	101.5
WAIST TO FIT (INS)	28	30	32	34	36	38	40

ALL CHILDREN'S PRODUCTS (excluding sweatpants)

AGES (YEARS)	1-2	3-4	5-6	7-8	9-10	11-12	13-14	15-16
HEIGHT (CM)	90	104	116	128	140	152	164	176
CHEST TO FIT (CM)	51-56	56-63	63-71	71-76	76-81	81-86	86-91	91-96
CHEST TO FIT (INS)	20-22	22-25	25-28	28-30	30-32	32-34	34-36	36-38

SWEATPANTS (children)

AGES (YEARS)	3-4	5-6	7-8	9-10	11-12
HEIGHT (CM)	104	116	128	140	152
WAIST TO FIT (CM)	47	50	53	56	62
WAIST TO FIT (INS)	18.5	20	21	22	24.5

MODELS



Lian wears size S or M
depending on fit.

Height: 178 cm

Chest: 85 cm

Waist: 76 cm



Paula wears size S or M
depending on fit.

Height: 178 cm

Chest: 86 cm

Waist: 65 cm



Joyce wears size S or M
depending on fit.

Height: 179 cm

Chest: 83 cm

Waist: 63 cm



Sophie wears size S or M
depending on fit.

Height: 176 cm

Chest: 84 cm

Waist: 62 cm



Nicole wears size M or L
depending on fit.

Height: 179 cm

Chest: 92 cm

Waist: 67 cm



Christiano wears size M or L depending on fit.

Height: 185 cm

Chest: 101 cm

Waist: 84 cm



Jurn wears size M or L depending on fit.

Height: 185 cm

Chest: 102 cm

Waist: 83 cm



Mads wears size S or M depending on fit.

Height: 187 cm

Chest: 99 cm

Waist: 79 cm



Matthias wears size M or L depending on fit.

Height: 186 cm

Chest: 104 cm

Waist: 82 cm



Addis wears size M or L depending on fit.

Height: 186 cm

Chest: 97 cm

Waist: 74 cm



Jürgen wears size L or XL depending on fit.

Height: 185 cm

Chest: 107 cm

Waist: 97 cm

FEATURES & FUNCTIONS



BREATHABLE

A material's breathability is measured in terms of how many grams of water vapour pass through a square meter of fabric over 24 hours (g/m²/24h).

The higher the value, the more breathable the product.



WATERPROOF

The water column test indicates how many millimetres of water a fabric can withstand before the pressure causes it to leak. Measurements above 1,500 mm are considered waterproof.



EASY CARE

A special finish ensures that the shirts and blouses are easier and quicker to iron.



LYCRA®

Lycra® is a brand name from the company Invista. It is an extremely stretchy elastane fibre with outstanding rebound properties. These textiles promise an improved fit and comfort to match.



LYCRA® T400®

This elastomultiester (LYCRA® T400®) is a modern double fibre material that can be stretched in all directions and then bounces back to its original shape. The high-quality material adapts to the movements of the wearer and always retains its shape.



TEFLON® (DUPONT™)

Teflon® coatings ensure that fabrics are resistant to water, oil and dirt. What's more, this does not have any negative impact on the weight, look, colour or breathability.



SPOT SHIELD™

Fabrics with a SpotShield™ finish are resistant to water and dirt. They even repel most oils without difficulty.



COOLMAX®

COOLMAX® features outstanding moisture-regulating properties. This innovative, breathable polyester fibre wicks away moisture extremely quickly through capillary action and keeps the body drier longer.



BIONIC-FINISH® ECO

The fluorine- and PFC-free finish prevents water and dirt from sticking to the material.



AQUAPEL™ BY NANOTEX®

Developed in order to offer reliable protection against wind and water, Aquapel™ is still breathable and at the same time features environmentally friendly fluorine- and PFC-free technology.



DUPONT™ SORONA®

The sustainable insulation with renewable plant-based materials is made with reduced energy consumption and 50% less greenhouse gas emissions.



FLUOR- AND PFC-FREE

Fluorine- and PFC-free materials are more degradable, for the good of both us and the environment.

FIND OUT MORE ONLINE

Full product specs, imagery, colour, size and fabric guides, are available online at **RUSSELLEUROPE.COM**

COLOUR PALETTE

Whether you are choosing formal shirts for corporate staff, or eye-catching sweats and polos for promotional teams, choosing the right colour is important. Russell offers a wide choice of colours across our garment collections.

Here are corresponding Pantone® references to help you select the colour that's right for you, however exact matches will vary due to the fabric type, dyeing processes and variations in printing. As such these colours should not be treated a 100% representative of actual garment colours. Please contact your sales representative for more colour details.



CD CANDY PINK
PANTONE® FABRIC: 14-2808 TPX
PANTONE® PAPER: 217 C
C:0 M:35 Y:5 K:0



57 FUCHSIA
PANTONE® FABRIC: 18-1856 TPX
PANTONE® PAPER: 1935 C
C:0 M:100 Y:7 K:0



81 PURPLE
PANTONE® FABRIC: 19-3737 TPX
PANTONE® PAPER: 7447 C
C:90 M:100 Y:30 K:15



PT PORT
PANTONE® FABRIC: 19-1726 TPX
PANTONE® PAPER: 7428 C
C:10 M:95 Y:43 K:73



41 BURGUNDY
PANTONE® FABRIC: 19-1716 TPX
PANTONE® PAPER: 5195 C
C:50 M:100 Y:70 K:45



CR CLASSIC RED
PANTONE® FABRIC: 19-1764 TPX
PANTONE® PAPER: 1945 C
C:0 M:100 Y:80 K:25



RE OXFORD RED
PANTONE® FABRIC: 18-1764 TPX
PANTONE® PAPER: 7636 C
C:0 M:99 Y:73 K:11



BR BRIGHT RED
PANTONE® FABRIC: 18-1662 TPX
PANTONE® PAPER: 1797 C
C:0 M:100 Y:100 K:0



44 ORANGE
PANTONE® FABRIC: 17-1464 TPX
PANTONE® PAPER: 1665 C
C:0 M:77 Y:100 K:0



PD PURE GOLD
PANTONE® FABRIC: 14-1064 TPX
PANTONE® PAPER: 137 C
C:0 M:29 Y:92 K:0



K2 YELLOW
PANTONE® FABRIC: 13-0746 TPX
PANTONE® PAPER: 129 C
C:0 M:0 Y:80 K:0



LM LIME
PANTONE® FABRIC: 14-0446 TPX
PANTONE® PAPER: 584 C
C:25 M:0 Y:95 K:0



BK STONE
PANTONE® FABRIC: 15-4101 TPX
PANTONE® PAPER: 421 C
C:13 M:8 Y:11 K:26



60 NATURAL
PANTONE® FABRIC: 11-0606 TCX
PANTONE® PAPER: 9224 C
C:4 M:9 Y:25 K:0



3M KHAKI
PANTONE® FABRIC: 15-1116 TPX
PANTONE® PAPER: 7536 C
C:0 M:10 Y:25 K:28



CQ CHOCOLATE
PANTONE® FABRIC: 17-0812 TPX
PANTONE® PAPER: 439 C
C:0 M:11 Y:17 K:75



DO DARK OLIVE
PANTONE® FABRIC: 19-0511 TCX
PANTONE® PAPER: 418 C
C:61 M:51 Y:64 K:32



38 BOTTLE GREEN
PANTONE® FABRIC: 19-5513 TPX
PANTONE® PAPER: 5477 C
C:100 M:50 Y:80 K:45



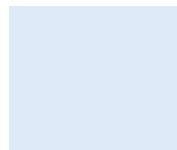
AL APPLE
PANTONE® FABRIC: 15-5534 TPX
PANTONE® PAPER: 348 C
C:95 M:0 Y:92 K:0



WL WINTER EMERALD
PANTONE® FABRIC: 17-5034 TPX
PANTONE® PAPER: 569 C
C:100 M:0 Y:50 K:10



AQ AQUA
PANTONE® FABRIC: 14-4809 TCX
PANTONE® PAPER: P 124-11 C
C:38 M:0 Y:16 K:5



BZ BRIGHT SKY
PANTONE® FABRIC: 14-4112 TPX
PANTONE® PAPER: 2708 C
C:15 M:5 Y:0 K:0



42 LIGHT BLUE
PANTONE® FABRIC: 14-4110 TPX
PANTONE® PAPER: 2708 C
C:30 M:14 Y:0 K:0



OD OXFORD BLUE
PANTONE® FABRIC: 14-4214 TPX
PANTONE® PAPER: 644 C
C:35 M:17 Y:0 K:0



SC SKY
PANTONE® FABRIC: 15-4020 TPX
PANTONE® PAPER: 651 C
C:48 M:22 Y:0 K:0



CP CORPORATE BLUE
PANTONE® FABRIC: 16-4021 TPX
PANTONE® PAPER: 652 C
C:60 M:35 Y:0 K:5



ZT AZTEC BLUE
PANTONE® FABRIC: 19-3950 TPX
PANTONE® PAPER: 653 C
C:80 M:40 Y:0 K:35



ZU AZURE BLUE
PANTONE® FABRIC: 18-4141 TPX
PANTONE® PAPER: 660 C
C:100 M:53 Y:0 K:3



BH BRIGHT ROYAL
PANTONE® FABRIC: 18-3949 TPX
PANTONE® PAPER: 2726 C
C:100 M:70 Y:0 K:5



OO OXFORD NAVY
PANTONE® FABRIC: 19-4033 TPX
PANTONE® PAPER: 2378 C
C:83 M:5 Y:26 K:34



NB BRIGHT NAVY
PANTONE® FABRIC: 19-3921 TPX
PANTONE® PAPER: 2380 C
C:91 M:71 Y:36 K:56



FN FRENCH NAVY
PANTONE® FABRIC: 19-4010 TPX
PANTONE® PAPER: 532 C
C:100 M:85 Y:35 K:55



65 TURQUOISE
PANTONE® FABRIC: 16-4535 TPX
PANTONE® PAPER: 638 C
C:70 M:0 Y:10 K:0



30 WHITE
PANTONE® FABRIC: 11-0601 TPX
PANTONE® PAPER: 7541 C
C:0 M:0 Y:0 K:0



36 BLACK
PANTONE® FABRIC: 19-4005 TPX
PANTONE® PAPER: BLACK C
C:100 M:50 Y:50 K:100



XW ZINC
PANTONE® FABRIC: 19-4104 TPX
PANTONE® PAPER: 432 C
C:45 M:12 Y:5 K:86



TT TITANIUM
PANTONE® FABRIC: 19-3906 TPX
PANTONE® PAPER: COOL GREY 11 C
C:35 M:5 Y:0 K:85



IR IRON GREY
PANTONE® FABRIC: 18-4214 TPX
PANTONE® PAPER: 431 C
C:45 M:25 Y:16 K:59



CG CONVOY GREY
PANTONE® FABRIC: 17-4405 TPX
PANTONE® PAPER: 444 C
C:18 M:5 Y:0 K:71



SI SILVER
PANTONE® FABRIC: 17-0000 TPX
PANTONE® PAPER: 877 C
C:0 M:0 Y:0 K:60



LX LIGHT OXFORD
PANTONE® FABRIC: 14-4002 (MARLED)
PANTONE® PAPER: COOL GREY 3C
C:5 M:0 Y:0 K:40

MELANGE



CM CHARCOAL MELANGE
PANTONE® FABRIC: 19-4023 TPX
PANTONE® PAPER: 426 C
C:0 M:0 Y:0 K:95



CA CARBON MELANGE
PANTONE® FABRIC: 19-3910 TPX
PANTONE® PAPER: COOL GRAY 11 C
C:68 M:49 Y:54 K:28



IM INDIGO MELANGE
PANTONE® FABRIC: 19-4027 TPX
PANTONE® PAPER: 534 C
C:100 M:68 Y:0 K:39



OM OCEAN MELANGE
PANTONE® FABRIC: 19-4035 TPX
PANTONE® PAPER: 2377 C
C:84 M:54 Y:29 K:28



BD BURGUNDY MELANGE
PANTONE® FABRIC: 19-1725 TPX
PANTONE® PAPER: 7428 C
C:0 M:100 Y:51 K:60



BM BRICK RED MELANGE
PANTONE® FABRIC: 18-1547 TPX
PANTONE® PAPER: 7623 C
C:0 M:99 Y:91 K:47

MARL



CM CHARCOAL MARL
PANTONE® FABRIC: 19-4023 TPX
PANTONE® PAPER: 426 C
C:65 M:43 Y:26 K:78



GY GREY MARL
PANTONE® FABRIC: 18-4005 TPX
PANTONE® PAPER: 424 C
C:30 M:20 Y:19 K:60



SY SILVER MARL
PANTONE® FABRIC: 15-4305 TPX
PANTONE® PAPER: 429 C
C:21 M:11 Y:9 K:23



D2 DENIM MARL
PANTONE® FABRIC: 19-3939 TPX
PANTONE® PAPER: 654 C
C:100 M:71 Y:10 K:47



NB BRIGHT NAVY MARL
PANTONE® FABRIC: 19-4033 TPX
PANTONE® PAPER: 2378 C
C:83 M:63 Y:26 K:34



MB BLUE MARL
PANTONE® FABRIC: 17-4041 TPX
PANTONE® PAPER: 2718 C
C:45 M:14 Y:0 K:0



HM MAROON MARL
PANTONE® FABRIC: 19-1535 TPX
PANTONE® PAPER: 3523 C
C:24 M:84 Y:64 K:49



MC CRANBERRY MARL
PANTONE® FABRIC: 19-1559 TPX
PANTONE® PAPER: 194 C
C:8 M:100 Y:55 K:37



RM RED MARL
PANTONE® FABRIC: 17-1635 TPX
PANTONE® PAPER: 7418 C
C:8 M:84 Y:52 K:5



2P PINK MARL
PANTONE® FABRIC: 18-2133 TPX
PANTONE® PAPER: 205 C
C:0 M:82 Y:27 K:8

CONTRAST



C6 CARBON MELANGE / BLACK

CA CARBON MELANGE
PANTONE® FABRIC: 19-3910 TPX
PANTONE® PAPER: COOL GRAY 11 C
C:68 M:49 Y:54 K:28



OO OXFORD NAVY / OXFORD BLUE

OO OXFORD NAVY
PANTONE® FABRIC: 19-4033 TPX
PANTONE® PAPER: 2378 C
C:83 M:63 Y:26 K:34



OD OXFORD BLUE / OXFORD NAVY

OD OXFORD BLUE
PANTONE® FABRIC: 14-4214 TPX
PANTONE® PAPER: 644 C
C:35 M:17 Y:0 K:0



LX LIGHT OXFORD / INDIGO MELANGE

LX LIGHT OXFORD
PANTONE® FABRIC: 14-4002 (MARLED)
PANTONE® PAPER: COOL GREY 3C
C:5 M:0 Y:0 K:40



L9 LIGHT OXFORD / BURGUNDY MELANGE

LX LIGHT OXFORD
PANTONE® FABRIC: 14-4002 (MARLED)
PANTONE® PAPER: COOL GREY 3C
C:5 M:0 Y:0 K:40



RE OXFORD RED / CREAM

RE OXFORD RED
PANTONE® FABRIC: 18-1764 TPX
PANTONE® PAPER: 7636 C
C:0 M:99 Y:73 K:11



36 BLACK / OXFORD NAVY

36 BLACK
PANTONE® FABRIC: 19-4005 TPX
PANTONE® PAPER: BLACK C
C:100 M:50 Y:50 K:100



OD OXFORD BLUE / OXFORD NAVY

OD OXFORD BLUE
PANTONE® FABRIC: 14-4214 TPX
PANTONE® PAPER: 644 C
C:35 M:17 Y:0 K:0



OO OXFORD NAVY / OXFORD BLUE

OO OXFORD NAVY
PANTONE® FABRIC: 19-4033 TPX
PANTONE® PAPER: 2378 C
C:83 M:63 Y:26 K:34



IM INDIGO MELANGE / OXFORD NAVY

IM INDIGO MELANGE
PANTONE® FABRIC: 19-4027 TPX
PANTONE® PAPER: 534 C
C:100 M:68 Y:0 K:39



BD BURGUNDY MELANGE / OXFORD NAVY

BD BURGUNDY MELANGE
PANTONE® FABRIC: 19-1725 TPX
PANTONE® PAPER: 7428 C
C:0 M:100 Y:51 K:60



B2 BLACK / OXFORD GREY / CONVOY GREY

36 BLACK
PANTONE® FABRIC: 19-4005 TPX
PANTONE® PAPER: BLACK C
C:100 M:50 Y:50 K:100

OXFORD GREY
PANTONE® FABRIC: 16-3907 TPX
PANTONE® PAPER: 536 C
C:31 M:26 Y:19 K:5

CG CONVOY GREY
PANTONE® FABRIC: 17-4405 TPX
PANTONE® PAPER: 444 C
C:18 M:5 Y:0 K:71



B4 BRIGHT NAVY / OXFORD BLUE / WHITE

NB BRIGHT NAVY
PANTONE® FABRIC: 19-3921 TPX
PANTONE® PAPER: 2380 C
C:91 M:71 Y:36 K:56

OD OXFORD BLUE
PANTONE® FABRIC: 14-4214 TPX
PANTONE® PAPER: 644 C
C:35 M:17 Y:0 K:0

30 WHITE
PANTONE® FABRIC: 11-0601 TPX
PANTONE® PAPER: 7541 C
C:0 M:0 Y:0 K:0



LB LIGHT BLUE / MID BLUE / BRIGHT NAVY

42 LIGHT BLUE
PANTONE® FABRIC: 14-4110 TPX
PANTONE® PAPER: 2708 C
C:30 M:14 Y:0 K:0

MID BLUE
PANTONE® FABRIC: 19-4026 TPX
PANTONE® PAPER: 2377 C
C:84 M:54 Y:29 K:28

NB BRIGHT NAVY
PANTONE® FABRIC: 19-3921 TPX
PANTONE® PAPER: 2380 C
C:91 M:71 Y:36 K:56



W4 WHITE / SILVER / CONVOY GREY

30 WHITE
PANTONE® FABRIC: 11-0601 TPX
PANTONE® PAPER: 7541 C
C:0 M:0 Y:0 K:0

SI SILVER
PANTONE® FABRIC: 17-0000 TPX
PANTONE® PAPER: 877 C
C:0 M:0 Y:0 K:60

CG CONVOY GREY
PANTONE® FABRIC: 17-4405 TPX
PANTONE® PAPER: 444 C
C:18 M:5 Y:0 K:71



W7 WHITE / OXFORD BLUE

30 WHITE
PANTONE® FABRIC: 11-0601 TPX
PANTONE® PAPER: 7541 C
C:0 M:0 Y:0 K:0

OD OXFORD BLUE
PANTONE® FABRIC: 14-4214 TPX
PANTONE® PAPER: 644 C
C:35 M:17 Y:0 K:0



W8 WHITE / OXFORD BLUE / BRIGHT NAVY

30 WHITE
PANTONE® FABRIC: 11-0601 TPX
PANTONE® PAPER: 7541 C
C:0 M:0 Y:0 K:0

OD OXFORD BLUE
PANTONE® FABRIC: 14-4214 TPX
PANTONE® PAPER: 644 C
C:35 M:17 Y:0 K:0

NB BRIGHT NAVY
PANTONE® FABRIC: 19-3921 TPX
PANTONE® PAPER: 2380 C
C:91 M:71 Y:36 K:56

